



ANGLO  
EUROPEAN  
SCHOOL

# WELCOME TO THE ANGLO EUROPEAN SCHOOL



[www.aesessex.co.uk](http://www.aesessex.co.uk)



Willow Green, Ingatestone, Essex, CM4 0DJ

# INFORMATION FOR NEW STUDENTS AND THEIR PARENTS – 2026/2027

<b>Contents:</b>	<b>Page</b>
AES Mission Statement	1
Learner Profile	2
School Routines:	3-9
• Daily Routine	
• Tutor Period	
• Catering	
• Assemblies	
• Teaching and Learning Vision Statement	
• Teaching and Learning Policy Summary	
• Homework	
• Supporting Independent Study	
• Day-to-day Assessment	
• Testing	
• Reporting to Parents	
• School Uniform	
• Equipment	
• Allocation of Lockers	
Student Well-being:	10-18
• Pastoral Care	
• Promoting Spiritual, Moral, Social and Cultural (SMSC) Development	
• Attendance	
• Leave of Absence	
• Family Holidays	
• Signing in/out and late arrival	
• Collecting children from/delivering children to school	
• Train Travellers	
• Medical Support Officer/First Aid	
• Behaviour Policy: Anti-Bullying	
• Online Safety	
• Behaviour Policy: Drugs Misuse or Abuse	
• Prohibited items and confiscations	
• Mobile phones and Associated Smart Devices	
• Sanctions	
• Addressing disadvantage	
• Free School Meals	
Enrichment:	19-25
• International Visits Programme	
• The Anglo European School International Enterprise Academy	
• Extra-Curricular Activities	
• Instrumental Tuition	
• AM School	

<b>Contents (Continued)</b>	<b>Page</b>
<ul style="list-style-type: none"> <li>• Sports Provision</li> <li>• School Library</li> <li>• Study Club</li> </ul>	
Challenge and Additional Support:	26-28
<ul style="list-style-type: none"> <li>• Academically More Able</li> <li>• Elite Performer Programme</li> <li>• Special Educational Needs and Disabilities (SEND)</li> <li>• English as an Additional Language</li> </ul>	
School Rewards:	29
<ul style="list-style-type: none"> <li>• Rewards</li> </ul>	
Parental Engagement:	30-32
<ul style="list-style-type: none"> <li>• Anglo European School Website</li> <li>• Social Media</li> <li>• Arbor</li> <li>• Weekly Anglo Bulletin</li> <li>• Parents' Evening</li> <li>• Parent Information Evenings</li> <li>• Parent Engagement</li> <li>• ParentPay</li> <li>• School Private Fund Contributions</li> <li>• Hardship Fund</li> <li>• Anglo European School Association (AESA)</li> </ul>	
Additional Information:	
<ul style="list-style-type: none"> <li>• Term and Holiday Dates</li> <li>• School Uniform and PE Kit</li> <li>• Equipment Needs</li> <li>• Example of Visits Programme</li> <li>• Example of Year 7 Homework Timetable</li> <li>• Example of Year 7 PE Timetable</li> <li>• Example of PE Autumn extra-curricular timetable</li> <li>• Example of extra-curricular enrichment programme</li> <li>• Study Club Code of Expectation</li> <li>• Study Club Form</li> <li>• Letter from Headteacher, Re: School Private Fund Contributions</li> <li>• School Private Fund Contributions – Banker's Order Form</li> <li>• Form to make Gift Aid Donations Declaration</li> </ul>	33 34-45 46 47-49 50 51 52 53-58 59 60 61 62 63

**The behaviour and attendance policies can be found on our website:**  
<https://www.aesessex.co.uk/home/information/information/policies/>



ANGLO  
EUROPEAN  
SCHOOL

# Mission Statement

The Anglo European School seeks to develop ambitious, resilient and principled young people who recognise their common humanity and who seek to create a better and more peaceful society through inter-cultural understanding and respect. We encourage our students to become active citizens who are internationally minded, lifelong learners, who understand that other people, with their differences, can also be right.

## Aims of the School



### Excelencia

To achieve academic excellence through a broad, balanced and inclusive curriculum, enriched by a strong international education.



### Interkulturell

To develop respect for their own and others' cultures; celebrating the rich diversity of languages, values and traditions represented in this school.



### L'Avenir

To provide students with the essential skills and knowledge to move confidently beyond the boundaries of their own communities as they prepare for the next stage in their lives.

## Pillars

Language Learning

Visits and  
Exchanges

Citizenship

Academic Research

International  
Baccalaureate  
Curriculum

## Learner Profile

Enterprising

Inquisitive

Knowledgeable

Critical

Courageous

Healthy

Articulate

Principled

Open-minded

Kind

Reflective

Creative

# LEARNER PROFILE

## As learners we all strive to be:

**Enterprising:** We are bold, innovative and resourceful when initiating and managing new projects

**Inquisitive:** We nurture our curiosity, developing skills for inquiry and research

**Knowledgeable:** We develop our interdisciplinary understanding, engaging with ideas of international significance

**Critical:** We use critical thinking skills to analyse and take responsible action on complex problems

**Courageous:** We approach uncertainty, challenge and risk with strategic forethought and determination

**Healthy:** We understand the importance of balancing different aspects of our lives to achieve health and well-being for all

**Articulate:** We are effective communicators and collaborators, expressing ourselves confidently in more than one language

**Principled:** We act with integrity, responsibility and dignity, with a sense of fairness and justice for all

**Open-minded:** We evaluate different cultures, values and traditions, seeking to understand why other people, with their differences, might also be right

**Kind:** We show empathy, consideration and respect, making a positive difference to the lives of others

**Reflective:** We consider and understand our strengths and areas for development to support our learning and progress

**Creative:** We appreciate different approaches, self-expression and interpretations, nurturing an open mind

# SCHOOL ROUTINES

## Daily Routine

The school operates a ten-day cycle of six periods per day. One of these periods is a lunch break and students therefore have 50 teaching periods per cycle:

	<b>Lower School (Years 7-9)</b>	<b>Upper School (Years 10 and 11) and Sixth Form</b>
Registration or Assembly	08:55 – 09:10	08:55 – 09:10
Period 1	09:10 – 10:10	09:10 – 10:10
Period 2	10:10 – 11:10	10:10 – 11:10
Break	11:10 – 11:30	11:10 – 11:30
Period 3	11:30 – 12:30	11:30 – 12:30
Period 4	Lunch	12:30 – 13:30
Period 5	13:30 – 14:30	Lunch
Period 6	14:30 – 15:30	14:30 – 15:30

A copy of the term dates can be found on page 33.

## Tutor Period



There is a Tutor Period lesson for all students once a cycle. In Key Stage 3 lessons, students will focus on developing their reading skills and they will follow a Personal Development curriculum, designed to tackle aspects of personal, social, health and economic education (PSHE). The work in Tutor Period Personal Development lessons will complement our Citizenship curriculum. Tutor Period and the Personal Development curriculum are delivered by Form Tutors and overseen by the Year Leader. All students are expected to have a reading book in their school bags every day, but this is particularly important for Tutor Period.

Tutor Period is also when our Student Voice committee meetings take place. There are six Student Voice committees, and they meet once a half term: Behaviour and Attitudes, Inclusion, Sustainability, Quality of Education, Personal Development and Safeguarding and Equality and Diversity. Every student has the opportunity to participate in this important aspect of school life.

## Catering



Hot and cold school lunches are available to purchase from the school through ParentPay or students may bring packed lunches. Menus and prices can be found on the 'Parents' page of the website under 'catering and menus'. Lunching with friends off-site in the main school is not permitted. Any student who, under exceptional circumstances, is authorised to leave the school site by the Headteacher should not loiter in the village or at the front of school and should be supervised by a parent.

All students must remain on site throughout the day, with the exception of those who have permission to go home and Sixth Form students.

Sixth Form students are expected to attend school every day. If a student does not have a lesson beyond 12:30, they may choose to resume their studies from home for the day. Students must sign out with the Sixth Form team in the Sixth Form office. The school may remove this privilege should a student not make desired academic progress or should they not behave in accordance with our behaviour policy. Students who have a lunch period during periods 4 or 5 may leave the school site for one of these periods only. They must sign out and back in with the Sixth Form team in the Sixth Form office in accordance with our safeguarding policy and fire regulations.

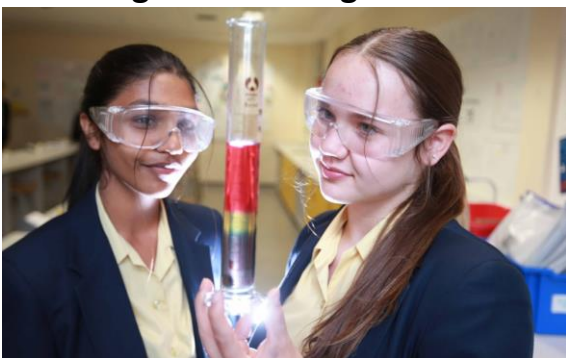
A breakfast menu is available before school and light snacks after school. Students also have access to catering at break time and lunch time via three cafes and the dining room.

## Assemblies

Assemblies are of a moral and ethical nature, which reflect Christian views as well as highlighting and celebrating other major religious beliefs. They also recognise the plurality of beliefs and non-beliefs, within and outside the school and are non-denominational. Parents have the right to withdraw their children from assemblies by writing to the Headteacher, but before doing so, parents are urged to refer to the Spiritual, Moral, Cultural and Social Policy, which can be found on our website.

Assemblies are also used to celebrate individual, form, sporting and culture achievements and to share key information about our school, local and international communities.

## Teaching and Learning Vision Statement



We aim to engender a vibrant learning community and centre of excellence for creative approaches to professional development, comprising high calibre teaching, which enables students to flourish psychologically, culturally and academically.

## Teaching and Learning Policy Summary

Teaching and learning at Anglo European School are symbiotic. We are a distinctive comprehensive school with a strong international ethos and broad-based inclusive curriculum. We endeavour to produce open-minded, confident, knowledgeable young people who are appreciative of other cultures and able to communicate effectively in English and at least one other foreign language. The school stands on the strength of its five pillars:

- Language learning
- Visits and Exchanges
- Citizenship
- Academic Research
- International Baccalaureate Curriculum



Teaching and learning at AES is fundamental to and fully in support of these pillars. We strongly identify with the principles of our learner profile and see it as our core purpose to not only develop students who possess these attributes, but also to be teachers who embody these characteristics. We are: Enterprising, Inquisitive, Knowledgeable, Critical, Courageous, Healthy, Articulate, Principled, Open-minded, Kind, Reflective and Creative.

## Homework

Independent study and wider reading are an important feature of any successful school and both make a vital contribution to learning. This is integral to all schemes of work and the school sets high expectations of students in completing homework. A homework timetable, which includes time allocation, is issued at the beginning of the academic year and can be found on our website under 'Curriculum'. The current timetable for year 7 is provided as an example on page 50.

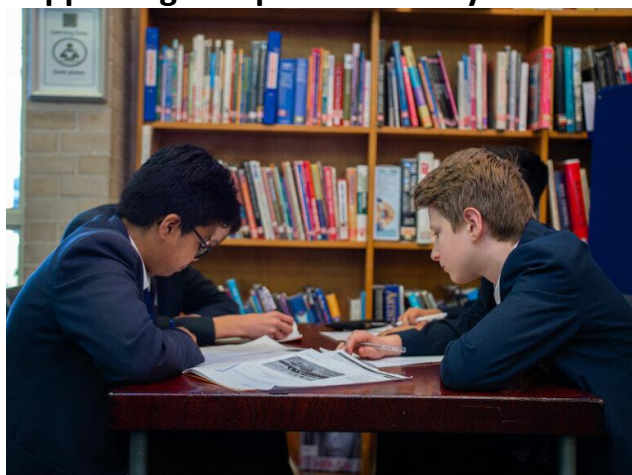
Homework can be any task that students complete outside timetabled lessons; this can be specific work set by a teacher that needs to be completed by a deadline, or additional work or wider reading and research that the teacher has suggested to the student to enrich their studies. Students can complete their homework at our Study Club in the Library. Study Club is open before school, at lunch times and after school, with support and supervision available for all students.

Homework should encourage students to develop the skills, confidence and motivation needed to study effectively on their own. The school aims to promote the ability to learn independently and to develop the flexibility necessary for lifelong learning. Homework should practise, reinforce, recap and consolidate the skills and understanding developed at school, and extends the learning process, for example through additional wider reading and research. The school also considers homework to be a means of involving parents directly in the learning process; it is an extension of the idea of partnership in learning and there are suggested wider reading and links that parents can support students with on the curriculum pages of the school website. Homework is also a means of managing particular demands such as completing examinations specifications and non-examination assessments, when appropriate.

Homework should be a specific task, appropriate to the time available, the age and ability of the student and it should be matched to the particular needs and ability of individual students. Extension or enrichment work and wider reading is available for the most able and adaptations to complete the task should be available for those who need it. Teachers may also supplement this with additional reading applicable to the relevant module of work being studied. Homework is also one forum for promoting reading for pleasure and improving literacy skills; where students have completed work before the end of the allocated time, they should use the additional time to read around the subject or read for pleasure.

All homework tasks for students in all years is recorded by the teacher on Arbor. Students are able to manage their deadlines, often with the support of their parents. This also ensures that all instructions are clear, resources are accessible to all and it is always clear that homework has been set.

### **Supporting Independent Study**



We recognise that not all students have access to a wide range of resources at home and so our Study Club is available in the Library for all students from 08:00 until the start of school, at lunchtimes and after school until 16:30. This is supported by our Study Club Managers who support students to find and access suitable resources, support literacy and the completion of homework tasks in a supportive and inclusive environment. Our librarians are also available to find suitable resources for study and research purposes and can collate materials on request for use in out of hours study clubs to support homework completion.

In addition, one hour of independent study time is allocated to students each cycle which is supervised by the tutor. In this time, students can complete homework, research, read independently or undertake literacy activities. This also teaches students to manage their time and homework tasks. For students in Years 7 to 10, the first half hour of this period is used for independent quiet reading, so that students develop the habit of reading regularly.

The school recommends that parents ensure that suitable facilities for study exist in the home. This should include books and stationery, access to a computer and internet, and a desk with adequate lighting in a quiet area. Time should be set aside for completion of homework each night and the work done should be monitored as appropriate. If circumstances mean that it is difficult for families to provide proper opportunities for homework, then parents should contact their child's Year Leader. The school will do whatever it can to provide support where possible.

### **Day-to-day Assessment**

Your child's teachers will take their work in for marking on a regular basis. This will be done in their exercise books or online. This should happen approximately once every six lessons but will depend upon the department. The teachers will not mark every piece of work in depth and will tell the students which pieces will be marked in this way. In general, the students should expect that deeply marked work will include the teacher celebrating success, indicating areas for development and telling your child to improve certain aspects. Many teachers use the start of the following lesson for the students to read their comments and improve their work. Staff will also use the framework of "What went well" and "Even better if" to respond through marking, as well as asking the students to respond and make improvements.

All teachers mark work in red pen and students make improvements in green pen; it is vital that your child has at least one green pen in their pencil case. When they are asked to mark their own work or each other's (peer assessment), they also use their green pens. All written work in exercise books should also be headed correctly and this helps marking; students should include (Title, Heading, underline & date) so that it is clear which pieces of work are notes, homework or practice, for example.

As technologies advance, the school is developing new practices and policies for assessment, with some marking happening digitally using the online platforms. Therefore, although students will continue to work in their exercise books, they may also be asked to upload a photo of their work, or a voice note on the online platforms for some of their subjects. We have found this to be a very efficient method of continuing to assess students' work and we are continuing to develop these assessment techniques.

## **Testing**

Each subject area will set tests or formal assessments on a regular basis, typically once every half term. In Years 7 and 8, these assessments will be marked using percentages rather than GCSE grades. The results will contribute to a student's overall attainment, which is reported at key points throughout the year.

In Years 9 to 11, assessments will be graded using the 9-1 GCSE scale. It is important to remember that at the beginning of Year 9, students may attain grades below a standard pass (4) as they continue to develop their knowledge and skills over time.

All students will also complete "end of year" tests, allowing them to practise revising multiple subjects and demonstrating their learning from across the year. For example, end of Year 7 tests take place in June, with exact dates published on the school website.

Throughout the year, teachers will also conduct smaller, "low-stakes" assessments, which will be recorded in students' books or assessment trackers. These, along with summative end-of-unit and end-of-year tests, will help inform reported attainment.

## **Reporting to Parents**

Parents receive a report near the end of each term, which is sent electronically via **Arbor** on dates published in the school calendar. Each report provides key information, including attendance and punctuality records, current attainment, and teachers' assessments of your child's attitude to learning.

Teachers may also highlight areas for improvement, such as the quality of homework or punctuality to lessons. These reports provide an opportunity for you and your child to discuss their progress, identify areas for development, and reflect on their learning against the expected skills and knowledge for that term.

In addition, parents will have access to subject-specific assessment descriptors, which will be made available when reports are issued. Reports also contain essential information about behaviour, attendance, and achievements.

A guidance resource is available on the school website to help parents understand the reports and how to use them effectively. Details on how to log in to your Arbor account will be provided to parents in September.

## School Uniform



A list of the school uniform and price lists can be found on pages 34-38. All students in Years 7-11 are required to wear the correct uniform. Parents are free to purchase school uniform from any supplier if it conforms to the uniform requirements and the colours established by the school's suppliers – Price and Buckland Limited and PMG Schoolwear. Ties and blazer badges can also be purchased through ParentPay and will be distributed by Student Services on the student's first day of school. School uniform is rigorously enforced and sanctions such as detentions are issued for breaches of policy.

Year 7 pin badges can also be purchased through ParentPay and again will be distributed by Student Services on student's first day of school. These help our staff to identify the year 7 students, which is especially invaluable with our younger students.



The PE kit and price list for Year 7-11 can be found on pages 35 and 37 and can be purchased on-line through Price and Buckland. Gum shields can be purchased through Student Services.

Uniform and PE kit can be purchased online and you will find details of our suppliers, sizing guides and latest prices on our website: <https://www.aesessex.co.uk/uniform-list/>. 'Nearly new' uniform can be purchased by contacting [studentservices@aessex.co.uk](mailto:studentservices@aessex.co.uk).

Please ensure that all items of clothing are clearly marked with the student's name. Lost property is housed within the school. Students can enquire about lost items by contacting Student Services. Unclaimed lost property is disposed of or passed on at the end of every half-term. The school and their insurers cannot take responsibility for personal property.

For reasons of safety, only limited items of jewellery are permitted. In the case of pierced ears, one pair of plain metal studs in the ear lobes may be worn but are not encouraged. These must be removed for P.E. so any new piercing must be done at the start of the six-week holidays. Parents who wish their child to wear a piece of jewellery or articles of faith for religious reasons must apply to the Headteacher in writing for their agreement. No other facial or visible body piercings are allowed; this includes nose and tongue piercings.

Makeup should be subtle and minimal. False eyelashes are not permitted. Hand decoration is not permitted unless authorised for religious observance. Nail varnish, acrylics or false nails are not permitted.

Students are not permitted to wear boots, sandals, trainers, plimsolls, or canvas shoes. Shoes should be of a safe and sensible style. Shoes should have a low heel. High heels of any sort are not acceptable. Only black laces and no brand labels. Trousers should be tailored and not flared, denim or leggings. Shirts and blouses are to be worn tucked in. Hooded sweatshirts are not permitted.

Sixth Formers are expected to follow the Sixth Form dress code.

## **Equipment**

A list of equipment required for classroom use can be found on page 46 and should be named. Personal items of equipment and other valuables are the responsibility of the student. The school and their insurers cannot take responsibility for personal property. In circumstances where children are separated from their valuables, e.g. when changing for P.E., students must follow the instructions issued by the staff. Parents are asked to ensure that children do not bring especially valuable items to school. Smart watches with internet access are not permitted.

Students should not bring more money than necessary to school i.e. travel with a small margin for emergencies.

## **Allocation of Lockers**

Every student on the school site has the opportunity to have a locker. These lockers are robust, secure and represent a significant investment for the school. It is an important service to our students in order to help them organise their books, equipment and PE kit. The school will ensure that any student requiring a locker will be issued with one. Should financial circumstances prevent this, please contact the Business Manager, Mrs Miller.

The school will expect students to look after their locker by keeping it secure, keeping their keys safe, not leaving food and drink overnight and only accessing them at break times and lunchtimes as well as before and after school. There will be a charge of £5.00 for keys that are mislaid. We will also expect students to completely empty their lockers at the end of each term and the end of the academic year and clear consumables from them daily. The school will dispose of the contents of any lockers which have not been cleared.

Importantly, the school has to make clear that it cannot take responsibility for any personal items that should be insured by you and cared for by your child. Items left unattended will be removed and ultimately disposed of. Students also undertake, therefore, not to leave books, clothing or other personal belongings lying around. We strongly recommend that you lease a locker for the duration of your child's school career. Valuable items should not be brought into school. In particular, parents should note that bags **are not** allowed in the Dining Hall or G4 at lunch time for Health and Safety reasons. If you expect your child to have school lunch, they must have a locker.

Upon receipt of payment through ParentPay, a locker will be allocated to your child on their first day. The cost is £120 for five years which includes a deposit of £20, or £20 per annum plus £20 deposit. The deposit will be refunded when your child reaches the end of Year 11. Refunds will only be given if the Leaver's Form has been signed, the two locker keys are returned together with confirmation that there are no outstanding debts. A refund form with Bank account details must be emailed to the Finance Department within 8 weeks of the students leaving date.

# STUDENT WELL-BEING

## Pastoral Care



The pastoral care of your child is of equal importance to the school as their academic well-being. Safe, happy children learn most effectively. We have a large and experienced pastoral team who work to support the health and well-being of our students.

Each year group is divided into eight forms named after internationally known individuals. In Years 7-11, ACEM are known as the 'x' side and NPST are known as the 'y' side.

### Years 7-11:

A – Margaret Anstee  
C – Marie Curie  
E – Albert Einstein  
M – Jean Monnet  
N – Alfred Nobel  
P – Pablo Picasso  
S – Mary Seacole  
T – Leo Tolstoy

### Sixth Form:

AK – Aung San Suu Kyi  
DB – Dietrich Bonhoeffer  
EF – Elizabeth Fry  
HJ – Helen Joseph  
LK – Martin Luther King  
MG – Mahatma Gandhi  
SW – Kenule Beeson Saro Wiwa  
TP – Thomas Paine

Your child's tutor acts as the principal mentor and your first point of contact with the school. They will know your child more fully than other members of our staff. Please contact them in the first instance and for all minor or routine matters. The Year Leader is available for items beyond the scope of the tutor. Please telephone or email ([enquiries@aessex.co.uk](mailto:enquiries@aessex.co.uk))

Our Pastoral Managers for Key Stage 3 and 4 support the work of the Year Leader and are members of our Professional Support Team. They are available to answer queries during the day when your child's Form Tutor and Year Leader may be teaching.

The Headteacher, Deputy Headteachers, Assistant Headteachers and Year Leaders are always pleased to see parents. However, an appointment is required to avoid a wasted journey.

## Promoting Spiritual, Moral, Social and Cultural (SMSC) Development

Throughout their time at Anglo European School, our students will develop their ability to be reflective about their own beliefs and perspective on life. They will learn how to have knowledge of, and respect for, different people's faiths, feelings and values. A summary of each element is outline below.

Our full SMSC Policy is available on our website:

<https://www.aessex.co.uk/home/information/information/policies/>

## **Spiritual Development**

This is the development of the non-material element of a human being; the part that animates and sustains us. Depending on our point of view, it either ends or continues in some form when we physically die. Aspects of this development include a sense of identity, self-worth, self-esteem and a sense of meaning and wider purpose to life.

## **Moral Development**

Moral development is the building of a framework by students of moral values which regulates their personal behaviour. It is also the development of students' understanding of society's shared and agreed values. Moral issues often arise where there is disagreement and moral development involves understanding that society's values change. It is about gaining an understanding of the range of views and the reasons for the range. It is also about developing an opinion about these different views. We aim to make clear to our students the values that we subscribe to as an institution and as a community. The will to behave morally as a point of principle is fundamental to moral development. In this sense moral development is to do with understanding the principles lying behind actions and decisions and not just behaviour itself. We therefore aim to promote moral development through the quality of relationships, standards of behaviour, quality of leadership, the values the school sets and exhibits through its structures and our curriculum and teaching.

## **Social Development**



Social development is about the school community working effectively with each other and participating successfully in the community as a whole. It is about functioning effectively in a multi-racial, multicultural society. It involves growth in knowledge and understanding of society, society's institutions, structures and characteristics, economic and political principles and organisations, roles and responsibilities and life as a citizen, parent or worker in a community. It involves the development of the interpersonal skills necessary for successful relationships.

## **Cultural Development**

Cultural development is building up students' understanding of their own culture and other cultures in their local community, region, country and internationally. This then leads to them developing their understanding of cultures around the world so that they feel comfortable in a variety of cultures and can operate in the emerging "world culture" of shared experiences mediated by television, travel and the internet. Students must understand that cultures are always changing and that coping with this change is an important skill. Promoting students' cultural development is intimately linked with valuing diversity and combating racism; issues deeply embedded in the school's international ethos.

## **Attendance**

Regular attendance is obviously a prerequisite to success at school. We endeavour to work closely with parents and students to maintain the highest possible levels of attendance. We have a dedicated Attendance Officer who will support staff and parents in ensuring their child attends school regularly in accordance with our Attendance Policy. A Student Inclusion and Welfare Manager supports this work and will work directly with families where attendance to school is poor to try and alleviate any barriers to attending school.

On each day your child is absent from school, please use the Arbor App to register their absence, together with the reason, before 08:55. The Education Act 1996, Section 7, requires that children attend school every day. If a child does not attend school and this absence is unauthorised then the school can make a referral to the Local Authority and each parent/carer can be prosecuted in the Magistrates Court under section 444 of the Education Act 1996 for failing to ensure regular attendance at school.

For any prolonged absence or sporadic absence, the school would require medical evidence in the form of a GP letter/hospital consultant letter in order to authorise further absence. Only the Headteacher can authorise absence from school. Please see our Attendance Policy:

<https://www.aesessex.co.uk/home/information/information/policies/>

## **Leave of Absence**

If absence is required for any reason other than illness or medical appointments, please complete a "Leave of Absence" form which can be found on the Parents' section of the school website under 'leave of absence'. A completed form must be sent for approval three weeks prior to the leave being taken. Please complete and submit to [attendance@aessex.co.uk](mailto:attendance@aessex.co.uk). The law does not permit leave of absence during term time and will only be approved for very exceptional circumstances and requires the consent of the Headteacher. Only in exceptional circumstances will a leave of absence be authorised, for example, for a funeral, a wedding or for music examinations. The number of days authorised for such event will be at the Headteacher's discretion.

## **Family holidays**

Holidays are not permitted during the school term. The Education Act 1996 prohibits Headteachers granting holiday in term time. Penalty notices are likely to be issued to parents who remove their child for the purpose of a holiday during term time. If the fine is not paid after 28 days a parent may be prosecuted (under Section 444 of the Education Act) for the offence of failing to ensure your child's regular attendance at school. Only the Headteacher can authorise absence from school.

## **Signing in/out and late arrival**

School begins at 08:55 with morning registration with their form tutor and, on a selected day, with their year group in assembly. Students who arrive after 08:55 will be met at the late gate, be signed in by a member of senior staff or Year Leader, will give a reason for their lateness, and will be issued a sanction for their lateness. The school monitors train and bus delays and students are not sanctioned if we have a record of late public transport, which is clearly not their fault. Where students are persistently late, we inform parents of this problem and request support with ensuring their child is punctual. Persistent lateness without valid reasons will be dealt with by the Year Leaders who will issue detentions to the student. If this continues, then a senior member of staff will interview the student and ask the parents to attend a school-based meeting to help resolve the matter.

Those arriving after 09:10 should report to the Attendance Officer located in Student Services in C block. Those arriving late, or notifying an absence in advance, must provide a letter/e-mail of explanation addressed to the Attendance Officer.

We encourage parents not to make medical appointments during the school day. Children only have 195 days in school and every single day and hour is vital to their progress. If you cannot avoid a medical appointment during the school day, your child should catch-up the work they missed. Students leaving the school for an appointment must sign out with the Attendance Officer located in Student Services. Students will not be allowed to leave school without written permission from their Parent/Guardian. Where necessary, they must sign back in with the Attendance Officer.

## **Collecting Children From/Delivering Children to School**

At the beginning and end of the school day, parents should use the New Road entrance for collecting children by car. We do not expect to see children being collected or dropped off on Willow Green as this represents a serious health and safety issue. If a child has mobility problems, arrangements can be made with the school office to pick up/drop off near the school office through the issue of an access permit.

## **Train Travellers**

We have approximately 600 students travelling daily by train. It is essential that our students travel safely and respect other passengers whilst doing so. We work closely with the staff at Ingatestone station and British Transport Police, and we expect behaviour at the station, and on the trains, to be in line with our school Behaviour Policy. We expect our students to be excellent ambassadors for our school whilst travelling to and from school. Please refer to our 'Making Travel Safer' Policy, which can be found on our website, to see the steps we take to ensure the safety of our students travelling to and from school. There is additional advice on the website for when trains are delayed or cancelled, or you may contact Greater Anglia direct on 0345 600 7245. There are procedures in place at the station to ensure student safety.

## **Medical Support Officer/First Aid**



In the event that a young person is ill at school, they must gain permission from a member of staff to go to the Medical Room. If the Medical Support Officer feels the student is unfit for school, then parents will be called to collect the student. It is the responsibility of the parents to collect their child from school. It is imperative that you have a contingency plan should this need arise, particularly with distances travelled. We will not permit students to travel on their own if they are unwell or injured.

We understand that at times students may need to take medication. Please contact the Medical Support Officer to discuss the administration of the medication which must be held in the medical room.

We have ten First Aid trained personnel on school site, who act in support of the Medical Support Officer as first responders.

## **Behaviour Policy: Anti-bullying**

Our school ethos creates a secure and safe environment for all the members of our school community to study and work within. Differences amongst us and cultural diversities are celebrated. Bullying, (including Cyber bullying) and/or extremist, radical, homophobic or racist behaviour will not be tolerated. Any action which persistently makes a child feel uncomfortable, insecure or threatened may be defined as bullying. Intentional behaviour of this kind will be regarded by the school as particularly serious. The school strongly disapproves of bullying in all its forms and considers it a most serious offence. Students should be aware that bullying is completely unacceptable at Anglo European School and they will be treated sympathetically if they tell someone it has happened to them. The Headteacher and all staff take the lead in creating a climate in which students will be encouraged to report immediately any bullying incident in the expectation that it will be dealt with urgently and fairly. To help support the students with the transition from Primary School to Secondary School, we have a group of Sixth Form students called Talk2Nish who are available for the young students to talk to if they have any concerns. They are also encouraged to speak with their Pastoral Manager.

Please refer to our Behaviour Policy, which can be found on our website:

<https://www.aesessex.co.uk/home/information/information/policies>

Students also receive anti-bullying assemblies (including National Anti-Bullying week) and lessons, where they learn what bullying is, how to support victims, how to seek support and advice, conflict resolution and much more. We run specific programmes on developing emotional intelligence around relationships, which Year Leaders can instigate for issues around bullying. These programmes teach students how to manage their relationship with others better and develop empathetic skills.

If your child feels they are subjected to bullying they can report their concerns to Student Services, where a member of the Achievement Team will listen to concerns, ask the students to write down their perspective and refer it to the most appropriate member of staff to investigate the matter and bring it to resolution. They can also refer any concerns to a trusted adult by email using [pastoral@aessex.co.uk](mailto:pastoral@aessex.co.uk), or report their concerns using the 'Feeling Concerned' button on the school website. Information about their concerns can be reported anonymously here or with a request for a meeting. Please refer to our Behaviour Policy for further details.

## **Online Safety**

We are dedicated to ensuring the safety of our students both within the school and, as far as possible, beyond its premises. We recognise that students use the internet for educational purposes as well as personal communication. While the use of mobile phones in school is not permitted, we strive to educate students on how to navigate the online world safely.

Our school has robust systems in place to filter and monitor internet usage in order to safeguard students while they use the school network. Students are expected to take responsibility for the computers they use while signed in and must ensure they log out once they have finished using the device.

Online safety is addressed through our curriculum, school policies, assemblies, and ongoing communication with parents. Additionally, we regularly share resources and videos via the school bulletin and social media platforms, ensuring that parents have access to the same advice and guidance as their children.

We encourage parents to monitor their child's use of mobile phones and social media, reminding students that the content they write or share on their devices is the legal responsibility of the contract holder, typically a parent. We advise parents to set appropriate parental controls on home computers and mobile phones and recommend that they actively engage with their child's online activity. For example, being included as a 'friend' on your child's social networking accounts can help you monitor content.

It is also important to note the age restrictions for many popular social media apps, and we strongly advise parents to adhere to these guidelines. For added peace of mind, we recommend that computers are kept in communal areas of the home, allowing parents to supervise the work being undertaken, the content being accessed, and the individuals with whom their child is communicating.

For further details, please refer to the Online Safety section of our website.

## **Behaviour Policy: Drugs Misuse or Abuse**

We are committed to ensuring that the school site is safe for all and that is free from drugs, alcohol, cigarettes and any smoking related paraphernalia, including vapes. This is to ensure and protect the safety and well-being of all our staff and students. Please refer to our Behaviour Policy, which includes the Drugs Policy.

In summary:

- Vapes, drugs, alcohol or related paraphernalia must not be bought, used, sold, supplied or shared on the school site or during the school day, including when students are on any visits with the school which take place off the school site.
- Students and staff must not be under the influence of an illegal or prohibited substance on the school site or in the vicinity of the school or on any school related visits, including when students are “hosting” exchange students.
- Students and staff must not bring drugs or drug related paraphernalia on the school site or share and provide these to others.

Any involvement in the above offences is highly likely to lead to permanent exclusion from school even if it is a first offence.

### **Prohibited items and confiscations**

Prohibited items are those items which are deemed to disrupt the school or dangerous to others. Dangerous items and items improperly used will be subject to confiscation. Confiscated items are only returned to students at the end of term or directly to a parent or, if illegal, will be passed to the police directly.

Chewing gum and Tippex (or other correction fluid) as well as solvents or chemicals of any kind are forbidden. Replica guns, or real weapons of any sort, must not be brought to school. Knives, including penknives, are prohibited by law and random searches are regularly taken to ensure students understand they may not carry prohibited items. Please refer to our Behaviour Policy.

### **Mobile Phones and Associated Smart Devices**

As you may already be aware, there has been considerable national debate regarding young people’s use of mobile phones. This has led many schools to review their mobile phone policies to prioritise student safety, focus, and engagement during the school day. The Government has made it clear that schools should, by default, aim to be mobile phone-free environments, with any exceptions kept to a minimum. At Anglo European School, we are dedicated to providing uninterrupted learning and fostering positive, face-to-face social interactions. Our updated approach reflects this commitment and aims to support students in staying focused on their education.

From September 2026, we will be strengthening our current policy by introducing a fully phone-free environment for students in Years 7–11. To support this, we will implement the Yondr pouch system, a well-established solution used by thousands of schools across more than 40 countries to create focused and engaged learning environments. After consulting with schools already using Yondr, we are confident this system will have a positive impact on our community.

A recent survey of over 900 schools using Yondr reported notable benefits, including:

- 86% observing improved student safety and wellbeing
- 84% reporting increased engagement during lessons, and
- 44% experiencing a reduction in behavioural incidents.

## **How the Yondr Pouch System Works**

The Yondr system involves students storing their mobile phones and other smart devices in a secure, lockable pouch. This will formalise our current expectation that phones are not accessed once students cross the school's "red lines" at site entrances.

From September 2026, students will place their phones and smart devices inside their assigned pouches before entering the school grounds. The pouches will remain locked throughout the school day and will be unlocked under staff supervision at the end of the day as part of our daily routine. Students will keep their pouches with them during the day, and the process will be fully explained to ensure a smooth transition.

## **Practical Information**

- **Issuing of Pouches:** In September, each student will receive a personally assigned, labelled pouch, which parents can purchase via ParentPay.
- **Responsibility:** Students will be responsible for bringing their pouch to and from school daily. We recommend keeping pouches safely stored in school bags when not in use to minimise the risk of loss or damage.
- **Emergencies:** In the event of an emergency, student safety remains our highest priority. As is already the case, we ask parents and carers to contact the school directly rather than their child during the school day. You can reach the main school office on 01277 354018.
- **Medical Needs:** Students with specific medical requirements, such as diabetes monitoring, will have alternative arrangements in place. Families in this situation will be contacted individually to ensure appropriate support.

## **Purchasing a Pouch**

To ensure the success of this initiative, students will only be permitted to bring mobile phones, and other smart devices, to school if they have a Yondr pouch to securely store them. Pouches are available to purchase on ParentPay at a cost of £15.75 per pouch.

If your child is entitled to free school meals and you feel unable to pay in full, please contact the Business Manager in confidence via [enquiries@aessex.co.uk](mailto:enquiries@aessex.co.uk).

Thank you for your continued support in making Anglo European School a place where students can excel academically, build meaningful relationships, and feel safe. Together, we can ensure the success of this initiative and create an environment where all students thrive.

## **Sanctions**

The school has a series of sanctions, including behaviour monitoring reports, detentions, suspensions and permanent exclusion. Students who are identified as a cause for concern may be placed on a behaviour monitoring report. After-school detentions are issued when necessary and parents may be inconvenienced as a result. Suspensions and exclusions are subject to national guidelines. We expect parents to support the school in issuing sanctions and giving similar messages to students at home so home and school work in partnership in setting the same expectations.

The school detains students according to our Behaviour Policy which can be found on our website under statutory information. We always aim to do this with your support and with at least 24 hours' notice (although we are not required to do so) unless a prior agreement has been made. Detentions are issued according to a set schedule and staff are deployed accordingly. It is not possible to arrange them to suit the convenience of parents. Neither is it possible to reschedule detentions after school to during the school day so that children can catch a school bus or train. It is the responsibility of parents to make transport arrangements in such circumstances.

We have a low-level disruption practice and procedure which manages inappropriate behaviour which is deemed to hinder the teacher teaching and/or the students learning such as coming to school ill-equipped, calling out, rudeness, etc. This behaviour is tackled by using a tried and tested warning system. It is clearly explained to students what low level disruption is and the effect it has on learning. If a student is warned three times in the lesson for this type of behaviour, they receive a 30-minute detention at lunchtime. These detentions are recorded and monitored to ensure that this type of behaviour is challenged. The parents of those students who persistently disrupt learning will be informed by letter. These persistent offenders will face further sanctions including loss of their lunchtime, removal from lessons and being placed in our Reflection Room or being placed on Year Leader and/or senior staff report.

### **Addressing disadvantage**

The aim of the Government's Pupil Premium Grant (PPG) is to raise attainment among disadvantaged children. It provides additional funding for disadvantaged pupils to ensure they benefit from the same educational opportunities as pupils from wealthier families.

The mechanism for allocation is based on an amount per pupil receiving Free School Meals (FSM), Looked After Children (LAC) and those from families with Parents in the Armed Forces. Our Pupil Premium Strategy Statement on our website explains how we use this allocated money and the strategies we have in place for to support all students to achieve their full potential.

#### [Pupil Premium - Anglo European School](#)

If you feel your child might be eligible to receive free school meals and therefore have access to additional support, please complete the free school meals form in the link below. Support in completing these forms is available from the Finance Office on request: [Free School Meals Application](#)

Any questions regarding Pupil Premium should be emailed to [enquiries@aesessex.co.uk](mailto:enquiries@aesessex.co.uk), for the attention of Ms Edge-Baron who is our Achievement Coordinator for Pupil Premium

### **Free School Meals**



It is important for children to have a good nutritious meal at lunch time. If you find it difficult to afford school dinners you may be eligible for free school meals. The Government is changing the eligibility criteria which will mean that all households receiving Universal Credit will qualify for this support.

Free School Meals is changing in 2026:

What is changing:

From September 2026, all students who have at least one parent or carer receiving Universal Credit may be eligible to receive free school meals. Students that are currently receiving free school meals and are no longer eligible will see their free school meals allowance stopped from the 1<sup>st</sup> September 2026.

What does this mean for your child?

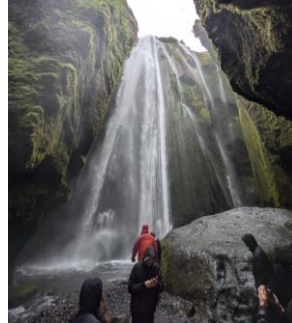
If your child is joining Year 7 or Lower Sixth in September 2026, they will need to apply for free school meals, if they do not, their free school meal allowance will stop. If the Government checker comes back not eligible, your allowance will stop. A new application will be required annually.

How do you apply for free school meals?

Free school meals can only be given on the basis of a completed and approved application and cannot be backdated. The Free School Meals application form can be found through this link: [Free School Meals Application](#)

# ENRICHMENT

## International Visits Programme



Now, more than ever before, has the need for compassion, tolerance, understanding and cooperation across borders become clear. We are very proud of our international programme and are constantly amazed by the impact both immediate and in the longer term of our visits on our students. We are delighted with the continued growth of our visits and exchanges programme this year and with the impact it is making on the lives of our students and partner schools.

Throughout the course of their school lives, our children are expected to participate in an extensive programme of visits and exchanges throughout Europe and beyond.

Our usual visits and exchanges programme involves over 800 students each year to 22 global destinations. The programme begins in Year 7 with a visit to Eblinghem Château on the Opal Coast in France. In Year 8 and 9, students exchange with schools in France, Germany, Spain and Italy. Year 9 MEP students will travel to China and there will be opportunities for students in Year 9, 10 and Lower Sixth To visit Japan. In Year 10, students can choose from a range of residential opportunities, and our academically more able linguists are invited to participate in longer term exchanges attending school with their partners in Germany, France and Spain. The Sixth Form has work experience exchange visits in France, Germany, Italy and Spain. Furthermore, the Sixth Form is offered the chance to either participate in the visits such as to Geneva or the Krakow/Vienna Residential.

To ensure that everyone has the opportunity to participate, the school has a means tested grant system which offers partial support towards the Year 7 visit to France plus one exchange for eligible students. Grant application forms can be requested via the finance office.

Each year, we have in the region of 60 visiting staff accompanying the groups and we are always anxious to find host families for our visitors. This has provided further opportunities for our families to engage with our partner schools in Europe and beyond and many have made good and lasting friendships with their guests. Host families are also sometimes needed for visiting students and we are able to offer a contribution towards the hosting costs for both staff and students. We depend, gratefully, on such volunteers to make our programme possible. If you are interested in hosting a family, please contact the International Office. There is a payment to cover the hosting costs for packed lunches and travel.

## The Anglo European School International Enterprise Academy

Our school is fortunate to be working closely with the Peter Jones Foundation. Peter Jones is an entrepreneur, who regularly appears on the television programme Dragons Den. In our school, we will develop your enterprising attributes, as it's a key part of our learner profile. We will challenge you to think creatively, confidently articulate your opinions and consider the increasingly globalised world around you.

In Citizenship, you will have the opportunity to undertake enterprise challenges and learn how to be an entrepreneur. As you move through the school, you will have the opportunity to take GCSE Business and even continue onto our International Enterprise Academy in the Sixth Form where you can study Business and Economics.

The students studying courses in our International Enterprise Academy are the role models of our the "enterprising" learner profile attribute. They start businesses, meet international business leaders and take on exciting work experience placements.

The International Enterprise Academy may be an aspiration for you one day, so look out for our enterprise room (E5) and all of the exciting activities which happen there. Please speak to Mr Knights if you have any questions about this exciting part of our school. More details can be found on our website: <https://www.aesessex.co.uk/sixth-form/curriculum/international-enterprise-academy/>

## Extra-Curricular Activities



The school offers an extensive programme of approximately 80 extra-curricular activities with a wide and diverse selection of clubs. Our aim is to stimulate and extend students' passions, interests, and knowledge. Students can choose to take part in competitive and recreational sports, drama groups and productions, musical activities, art, technology, languages, history, and many others. All extra-curricular activities are inclusive in nature and we encourage all of our students to take part and showcase their many talents.

Examples of the extra-curricular programmes for enrichment and the Physical Education department can be found on our website <https://www.aesessex.co.uk/home/curriculum/extra-curricular/>. This is updated every term.



The AM school runs before school, Monday to Thursday. Students will need to be in school at 08:40 and will be registered by our music teachers in the Music Department. The ensembles will run from 08:40-09.10 when students will be dismissed to Lesson 1. This will give students a unique opportunity to develop their ensemble skills and work with students from across the key stages, allowing senior students to develop arts leadership skills within the group, which could lead to the Arts Award.

Lower school students will have the benefit of working with more experienced students studying GCSE and A Level Music to refine their skills and learn from their peers' advanced musicianship. The programme of ensembles for 2024-25 was as follows: -

Monday	Tuesday	Wednesday	Thursday
Year 10 Ensemble Year 7 Ensemble	Orchestra Year 8 Ensemble	Choir Year 11 Ensemble	Orchestra Year 9 Ensemble

### Sports Provision:



The Physical Education Department organises a wide number of representative teams in many sports. Our aim is to give all students an opportunity to play sport in a competitive environment with other schools. We strongly encourage all of our students to lead a healthy and active lifestyle and provide an extra-curricular sports programme to endorse this.

Those students chosen to play sport for the school are expected to attend coaching practices and commit themselves to regular fixtures. In return the Physical Education Department organises regular local, regional and national competitions and provides expert sports coaching from outside agencies when opportunities are available.

The school promotes a positive attitude to a healthy lifestyle and encourages all students to actively pursue this through curricular and extra-curricular opportunities within the Physical Education Department. Please see the Physical Education timetable on our website which includes not only the traditional sports but also alternative, modern activities.

All students are required to participate in a number of roles in lessons and should always bring their PE kit to lessons. If your child needs to wear glasses in order to safely participate in PE and be able to see clearly, they are required to wear specialist sports glasses for any contact sports such as football and rugby. You may also wish to consider sports glasses for other ball games such as netball and basketball.

Where students have been ill, have a medical condition or issues with mental health, the teaching staff can modify activities which in many cases can assist in the recovery process from injury or illness or in developing confidence and self-esteem. We expect parents to fully support the curriculum followed by the school, which includes a statutory requirement to follow a course in Physical Education.

Students will only be withdrawn from activities upon written medical advice and in cases of chronic long-term injuries a doctor's certificate is required. Only our Headteacher can give permission for students to be exempt from Physical Education or to make exceptional modifications.

The Physical Education Department makes every effort to work with parents to ensure that all students receive their entitlement to physical education and that full attention is paid to our duty of care towards children.

### Paris Saint-Germain (PSG)



The PE department have entered into an exciting partnership with Paris Saint-Germain (PSG) Football Club to offer students in Year 7 and 8 additional football coaching. Students wear their PSG academy kit to school on the day of the coaching which takes place during either lunch or afterschool as well as some lesson time. Experienced and well qualified football coaches are employed by the PSG academy to run the sessions and are provided with sessions plans written by the PSG sporting director.

### School Library



The Anglo European School Library is open throughout the school day and is a vibrant, busy and popular area of the school where students are able to study, work and read in an engaging environment.

All students are encouraged to use the wide range of exceptional and diverse resources available to them within the library for assistance and progress with their studies, as well as for leisure and general interest, and to enable them to develop their study skills. All students in Year 7 take part in one library lesson per cycle. These students will follow a comprehensive Library induction and reading programme.

As well as access to computers internet with coloured printing ability, there are numerous tables and seating areas for individual and/or class use. There are also sofas and comfortable chairs to enhance quiet reading time and an excellent, well-stocked selection of resources to facilitate effective study and support wider reading.

In addition to an extensive fiction and non-fiction provision, students have access to a large selection of Key Stage 3 and GCSE Study Guides covering all the main subject areas to support revision for key assessments.

Other facilities available include a Stationery Shop that is open at morning break and lunchtime. Stationery items are also available to borrow if required.

We are also fortunate to be home to the Careers Resource Area. This area includes the prospectus' from a range of UK and global universities, information regarding apprenticeship opportunities and dates for local college open days. The area is updated regularly and students may explore in further detail using our web-based careers platform, Unifrog. Information booklets providing information of a range of industries are also available, giving students the chance to investigate career options of interest.

## Study Club



The Study Club is an excellent opportunity for students in all year groups to have access to staff and resources to support them with their individual homework requirements, to start or complete independent learning activities and coursework. This resource also enables students to interact with other students from all year groups enriching their social circle within the school.

The Study Club is open before and after school and also during lunchtime in the Library and Information Centre. Study Club is supervised and managed by our Study Club Managers, who are well acquainted with our ethos and desire for all students to reach their true potential, whilst being understanding of the pressure homework can cause if resources are not easily to hand at home. In addition to supervision, our Study Club Manager can offer advice on various ways to learn, study and prepare for assessments. It is essential that students bring suitable study or reading materials and are clear how they are spending their time in the Library. This is **not** a childcare facility and students who are not occupied with work or independent reading and disturb the study time of others will be asked to leave.

The aims of the Study Club are to:

- provide suitable accommodation for independent learning
- provide experienced support for study skills
- make books, revision guides and computer facilities available on site outside normal school hours

- encourage the development of successful independent learning strategies
- provide the opportunity for GCSE students to continue coursework at school
- help ensure that students attending Study Club are fully engaged in furthering the skills and knowledge required to reach their academic targets

The morning session runs from 08:00 until 08:50 and the after-school session starts at the end of school and finishes by arrangement with parents or guardians, **but no later than 16:30, Monday to Friday.** Parents should arrange a time to collect their child or they can contact the school office or the Library (01277 351918) when they are ready to collect them. Those students attending Study Club before or after school are required to submit the Study Club form on page 60 and ensure the school office is informed of any change to contact telephone numbers in case of an emergency.

Study Club also operates at lunch time. Our Study Club Manager monitors students' use of IT during this time and ensures students can access appropriate on-line resources. The Librarian is also present at lunchtime to support reading skills, finding books and other relevant resources.

This has been a very successful resource which many students of all ages have enjoyed and benefited from. We hope your child will take the opportunity to manage their work effectively and benefit from the support Study Club can provide for independent learning. This facility provides access to 10,000 books, computers and study advice which costs £17,000 annually. We therefore ask parents to make a donation, via ParentPay, to help fund this facility for each child that makes use of it.

# CHALLENGE AND ADDITIONAL SUPPORT

## **Academically More Able**

To ensure that the needs of the Academically More Able students are met, we place a high priority on classroom provision, where students have access to the greatest opportunities. AMA students will also have opportunities within subject areas where they are identified as being particularly talented, such as lunchtime activities, clubs, competitions and opportunities to stretch themselves. We have a wide range of enrichment activities that supplement and extend students' learning beyond the classroom setting. In addition, a small number of particularly able students will have further opportunities to be stretched and challenged with AMA enrichment opportunities organised for them such as Brilliant Club, RSC workshops, Speak Out Challenge, Maths Challenge, Languages Olympiad and completion of the HPQ. AMA provision at Anglo helps our students to become ambitious, resilient and principled young people who recognise their common humanity and who seek to create a better and more peaceful society through inter-cultural understanding and respect.

## **Elite Performer Programme**

The Elite Performer Programme (EPP) supports students who are performing at an exceptionally high level in sport, performing arts, or other specialist disciplines.

“Elite” status is defined by a sustained and significant commitment outside of school, which typically includes regular training, rehearsals, performances, or competitions. In many cases, students will be performing or competing at national level or equivalent.

Students accepted onto the programme are allocated a school mentor. The mentor acts as the key point of contact between the school, the student, parents/carers, and external coaches or organisations. Regular meetings are held to review academic progress, attendance, punctuality, behaviour, and external commitments.

Where appropriate, the school may consider limited flexibility to support elite-level commitments. This may include, for example, arrangements relating to occasional absence for competition or performance, or adjustments to deadlines. However, the school does not offer flexible or part-time education, and all students remain fully enrolled in a full-time curriculum with high expectations for engagement and achievement across all subjects.

Participation in the programme is subject to ongoing review and is dependent on:

- Satisfactory academic progress in all subjects
- Strong attendance, punctuality, and behaviour
- Continued commitment to the wider life of the school

Mentors also support with leave of absence requests, communication with external coaches, and, where appropriate, coordination of extensions for homework or coursework.

The programme maintains a record of students' commitments and achievements, ensuring that both their academic and external responsibilities are effectively supported.

Our current and former Elite Performer students have included individuals who have:

- Represented professional football academies and national squads, including Arsenal, Tottenham Hotspur, Millwall, and England age-group teams
- Competed at national athletics championships, including U20 England Championships and British Championships trials
- Performed in West End productions
- Competed in professional horse racing events at venues such as Newmarket and Lingfield

For further information, please contact [enquiries@aessex.co.uk](mailto:enquiries@aessex.co.uk), marking your email for the attention of the Elite Performer Co-ordinator.

## **Special Educational Needs and Disabilities (SEND)**

The school supports the special and additional needs of our students in accordance with the SEND Code of Practice. The SEND Team includes the SENCO and SEND Assistants.

The SEND provision may include:

- Supporting the transition of students as they move to a the secondary phase and a new key stage
- Tracking and monitoring student progress. Where students have not met expected levels of progress, student interventions may be put in place to address this.
- Supporting students in class.
- Providing laptops for use in class.
- Ensuring Individual Education Plans, (IEPs) are implemented, ensuring advice is accurate, pragmatic and implemented in lessons effectively
- Providing advice to staff, including student information, strategies and support
- Giving training to teachers and support staff on a range of special and additional needs and the associated provisions.
- Testing for and organising examination access arrangements, including relevant literacy, screening and assessments
- Running a KS3 lunch Club, which provides social time and homework support
- Providing social skills groups for selected students
- Having targeted individual and small-group intervention programmes for selected students
- Offering wellbeing support for students
- Advice and support for parents and carers
- Use of external agency support for a range of students with additional or complex needs

## **English as an Additional Language**

The Anglo European School celebrates the ability to speak a language other than English as a significant advantage, not a hindrance. The English as an Additional Language department (EAL) falls under the umbrella of the English department and is staffed by an EAL Co-ordinator and EAL teachers. The department supports students who come to us with a first language other than English. In practice, this means that we work most often with students who are new to this country, and whose knowledge of English is at a comparatively low level. In such instances, students are assessed on arrival to establish their level of competence in spoken and written English. Work is undertaken with students across the year groups ranging from New to English, Early Acquisition, Developing Competence, Competent and Fluent.

Where appropriate, additional English skills lessons are provided and students are withdrawn from timetabled lessons in order to develop their English skills. We offer in-class support in a range of subjects, as well as being available as far as possible throughout the school day if students need help with work, have a problem they want to discuss, or just need somewhere quiet to sit.

The school monitors and supports the achievement of children with English as an Additional Language. Many of these students are amongst our highest achievers well outperforming the national average for English and Maths and the EBacc subjects. We work closely across departments to try to ensure appropriate differentiation and individualised tracking. We strive to place EAL students in sets which are appropriate for their ability level, not their current level of English and we offer support and advice to help empower the students to achieve their full potential. All staff are aware of those who are new to English or who are underachieving because their English fluency is still developing. Where appropriate, an individualised curriculum is formulated to meet the needs and ability of the student.

# SCHOOL REWARDS

## Rewards

Recognition of achievement and effort within the classroom and outside of our school community makes an important contribution to our students' progress, motivation and self-esteem. We actively encourage students to challenge themselves and provide regular opportunities to share their successes with their parents.

Achievement points are issued by subject teachers or any other member of the school community. Students receive recognition for their curriculum achievements, efforts within the community and continuity of standards within tutor time and assemblies. Once a student has achieved a certain number of points a reward card will be issued in recognition of the students' achievements. Further recognition will involve a meeting with a Deputy Headteacher or Headteacher and letters of achievement being issued. The school will also recognise achievement via the school bulletin, X, Instagram, Facebook and in the local press.

There are three award evenings each year, one for Year 7, 8 and 9, one for Year 9 and 10 and one for Year 11 and the Sixth Form, held at Anglia Ruskin University where subject awards and other prestigious awards are presented.

Students can participate in Interform competitions in PE and Languages throughout the year. These competitions take place in and outside of class and encourage a sense of belonging, collective responsibility and celebration of achievement as a form group. As well as participating in Interform events, students earn achievement points for their work in class and in the wider community which contribute to the Interform totals. Their contributions to visits and exchanges are also recognised in this way, as staff will reward those who show exceptional engagement, leadership and an open-minded, international mind-set whilst acting as ambassadors for the school. Half termly Achievement Assemblies provide the opportunity to celebrate good attendance, achievement points and academic endeavour where we recognise student participation in lessons and award 'Student of the Term' for each year group.

# PARENTAL ENGAGEMENT

## Anglo European School Website

Please refer to our website [www.aesessex.co.uk](http://www.aesessex.co.uk) for key information for parents and students, such as homework, access to student documents, important dates for your calendar, latest news, etc. If you have any concerns, please contact our main office on 01277 354018 or email: [enquiries@aessex.co.uk](mailto:enquiries@aessex.co.uk).

## Social Media

We would like to encourage you to follow our various social media platforms:

<https://www.facebook.com/angloEuropeanschool>

<https://www.youtube.com/@angloEuropean73> <https://www.instagram.com/angloEuropeanschool73>

<https://www.linkedin.com/school/anglo-european-school>

<https://www.tiktok.com/@anglosixthform>

These are a great way of keeping up to date with the latest news and information about the school.

## Arbor

We are committed to improve the quality of our communication with students and parents. Anglo European School currently uses the Arbor platform to communicate with parents. The intention of the platform is to provide parents with day-to-day information of their child in school, as well as all central communications, reporting and parental polls. You will be given further information on how to set up your account, later. There is an app that is downloadable for parents and students as well as browser-based access to the platform.

## Weekly Anglo Bulletin

Every week we send parents/carers, via Arbor, our Anglo Bulletin which contains student news, information on school events as well as opportunities available in school and beyond to enrich your child's development. It is topical, vibrant and informative and reflects the unique ethos and work of the school. Everything you need to know about Anglo news and events is here. Please read it weekly. It is also available on the website: <https://www.aesessex.co.uk/home/about-us/bulletin/>.

## Parents' Evening

These are the most important opportunities in the school year for parents/carers and teachers to meet and make a positive difference to a child's progress. School Cloud is an online portal used to connect teachers and parents online, allowing for parents a video conferencing platform with which to speak with teachers. All appointments are made by the parents using the site, which is accessible by phone, tablet or computer. We expect all parents to attend and cannot guarantee to provide feedback if they don't, although we endeavour to do so. To ensure that all students and parents have opportunity to speak to their teachers, these appointments are restricted in length. If you are unable to attend for a legitimate reason, please let the Pastoral Manager know and we will endeavour to support you with further information about your child's progress.

## Parent Information Evenings

The school holds Parent Information Evenings in the Autumn Term, which aim to explain how parents can actively engage with their children on key aspects of the curriculum, alongside providing information about the pastoral guidance on offer to support their child.

## **Parent Engagement**

At the beginning of the academic year, we host, before the more formal Parental Information evenings, a forum for parents who may have any queries or questions for our Special Educational Needs or Pupil Premium Students. This is a time parents can feedback, speak to professionals who can offer advice, information and direction for their child specifically. We also complete throughout the academic year Parent Forum Surveys for all year groups and different clusters of students which helps us make sure we are providing the best standard of education for your children; we do this because we are keen to know how you feel about our school. This helps us to find out where we are doing well and where we could do better, helps us to decide which areas we should be prioritising to work on in our school improvement plan and finally to make sure we are meeting the needs of you and your children.

## **ParentPay**



The school uses a service called ParentPay which is a cashless payment system to pay for dinner money, school visits, lockers, music lessons and much more. ParentPay enables you to view all items available to each of your children along with relevant costs and details. We are keen to encourage all parents to pay in this way as it ensures that all money transactions are safe and secure.

ParentPay offers you the freedom to make payments whenever and wherever you like, safe in the knowledge that the technology has the highest internet security available. Your family has a secure online account which can be accessed with a unique user ID and password. You will be prompted to change your user ID to an email address and the password to something memorable.

Making a payment is easy. You simply select the item to pay and follow the instructions to complete your payment. You can pay for multiple items during a single online session. ParentPay holds an electronic record of your payments to view at a later date should you wish. No card details are stored in any part of the system. For more information visit [www.ParentPay.com](http://www.ParentPay.com).

A letter is sent to all new parents with their username and password. If you have any questions or problems accessing your account, please contact our Finance Office by email [finance@aesessex.co.uk](mailto:finance@aesessex.co.uk)

## **School Private Fund Contributions**

The school's private fund plays a very important part in the running of school activities. It acts as the fund for all our school visits and enables us to enrich the provision made to students. These enrichments include transport costs to school fixtures, support for musical and dramatic productions, educational visits, minor capital works and much more. These worthwhile activities can only be maintained if parents continue to support the school by making annual donations to this fund. The accounts of the fund are audited annually and approved by the governors.

This year we are suggesting a minimum voluntary contribution of £60 per child. It will be appreciated if parents make their total annual contribution by using the ParentPay service or by Standing Order.

Parents will understand that agreeing to make their contribution as a regular gift aid donation to the school increases the income of the school due to tax concessions. A separate letter on this subject is on page 61 together with a banker's order form on page 62 and gift aid donations declaration on page 63.

## Hardship Fund

We have a hardship fund that plays a crucial role in providing financial assistance or support to students who are facing significant financial difficulties that may hinder their ability to continue their studies or achieving their academic goals. If you would like to make a donation the Hardship Fund Donation account can be located in ParentPay under Payment Items.

## Anglo European School Association (AESA)



The Anglo European School Association is a registered charity run by AES parents. It is part of the Anglo European Co-operative Trust and fulfils the role of representing parents on the Anglo European Co-operative Trust Forum. It exists to:

- Enhance and build relationships between staff, parents and others associated with the school
- Engage in fundraising activities to support the school
- Provide a forum for discussion between parents and school

All parents and carers who have children attending the Anglo European School automatically become members of the AESA. It creates a network of parents who work to support the school financially as well as provide an opportunity for the school to consult with the parent body. The committee is always looking for volunteers to help at events and welcomes new ideas about how to raise funds for the school.

The money raised each year is used to enhance the work undertaken by different departments within the school to support teaching and learning. These fundraising efforts have helped to finance equipment for the Music and PE departments; books and educational resources for the Maths, Languages and Humanities departments; school productions to support the study of Literature and the mental health awareness; and most recently funded a literacy initiative at school to coincide with the Essex Year of Reading.

Easy ways to support the AESA, include:

- Sign up to the **AESA Parents' Lottery** and win fantastic prizes of up to £25,000 while directly supporting the school
- Purchase discounted tickets to **Adventure Island Fun Park**
- **Give as You Live** – do you shop online? If yes, please support the AESA through Give as you live
- “Like” the AESA Facebook Page
- Volunteer your time at an AESA organised event
- Donate raffle prizes to AESA events
- Join the AESA Committee (meets approximately 6 times per year)
- Attend an AESA fundraising event such as our termly quiz night

If you would like to learn more about the AESA or have any questions, please email [aesa@aesessex.co.uk](mailto:aesa@aesessex.co.uk)

# TERM AND HOLIDAY DATES

## SEPTEMBER 2026 – JULY 2028

Please note, the law dictates that all family holidays must be taken during these school holiday periods

### AUTUMN TERM 2026

First day of term	Tuesday 1 <sup>st</sup> September 2026 - <b>Non-Pupil Day</b> Wednesday 2 <sup>nd</sup> September 2026 – <b>Non-Pupil Day</b> Thursday 3 <sup>rd</sup> September 2026 - <b>Year 7 and L6 students only</b> Friday 4 <sup>th</sup> September 2026 - <b>All year groups</b> Thursday 24 <sup>th</sup> September 2026 – <b>early closure at 12:30</b> Friday 25 <sup>th</sup> September 2026 – <b>Non-Pupil day</b>
Half term	Friday 23 <sup>rd</sup> October to Friday 30 <sup>th</sup> October 2026
Last day of term	Friday 18 <sup>th</sup> December 2026 - <b>early closure at 12:30</b>

### SPRING TERM 2027

First day of term	Monday 4 <sup>th</sup> January 2027 – <b>Non-Pupil Day</b>
Half term	Monday 15 <sup>th</sup> February to Friday 19 <sup>th</sup> February 2027
Last day of term	Thursday 25 <sup>th</sup> March 2027

### SUMMER TERM 2027

First day of term	Monday 12 <sup>th</sup> April 2027
May Day	Monday 3 <sup>rd</sup> May 2027
Half term	Monday 31 <sup>st</sup> May 2027 to Friday 4 <sup>th</sup> June 2027
Last day of term	Wednesday 21 <sup>st</sup> July 2027 – <b>early closure at 12:30</b>

### AUTUMN TERM 2027

First day of term	Wednesday 1 <sup>st</sup> September 2027 – <b>Non-Pupil day</b> Thursday 2 <sup>nd</sup> September 2027 – <b>Non-Pupil day</b> Friday 3 <sup>rd</sup> September 2027 – <b>Year 7 and L6 students only</b> Monday 6 <sup>th</sup> September 2027 – <b>All year groups</b> Friday 24 <sup>th</sup> September 2027 – <b>Non-Pupil day</b>
Half term	Monday 25 <sup>th</sup> October to Friday 29 <sup>th</sup> October 2027
Last day of term	Friday 17 <sup>th</sup> December 2027 - <b>early closure at 12:30</b>

### SPRING TERM 2028

First day of term	Tuesday 4 <sup>th</sup> January 2028 – <b>Non-Pupil day</b>
Half term	Monday 14 <sup>th</sup> February to Friday 18 <sup>th</sup> February 2028
Last day of term	Friday 31 <sup>st</sup> March 2028

### SUMMER TERM 2028

First day of term	Tuesday 18 <sup>th</sup> April 2028
May Day	Monday 1 <sup>st</sup> May 2028
Half term	Monday 29 <sup>th</sup> May 2028 to Friday 2 <sup>nd</sup> June 2028
Last day of term	Friday 21 <sup>st</sup> July 2028– <b>early closure at 12:30</b>

The following days, which will be set aside for staff preparation and in-service training, will be holidays for all our students (subject to change):

#### NON-PUPIL DAYS 2026/27:

Tuesday 1/9/2026	Friday 25/9/2026
Wednesday 2/9/2026	Monday 4/1/2027

#### NON-PUPIL DAYS 2027/28:

Wednesday 1/9/2027	Friday 24/9/2027
Thursday 2/9/2027	Tuesday 4/1/2028

# SCHOOL AND P.E. KIT

**Main School Uniform: see visual on page 39**

**Main School Uniform 1:**

- Navy blazer with school badge\*
- Plain white shirt with collar, to be worn tucked in and with a school tie\*
- Black trousers (ankle length, tailored and not flared). Denim, cords, lycra and leggings are not acceptable
- Plain black/navy socks

**Or**

**Main School Uniform 2:**

- Navy blazer with school badge\*
- Gold blouse with collar, to be worn tucked in with no tie
- Navy knife pleat skirt with school badge\*
- Plain black/navy socks, black/navy tights (not both)

**Optional:**

- A plain navy V-necked pullover with gold trim, with **or** without school badge\* may be worn, but only under a blazer.
- Pin badge to be worn on blazer lapel (Year 7 students - through ParentPay/Student Services)

**Shoes:**

- Plain black shoes without commercial logos (see visual on page 41).
- No boots, sandals, trainers, plimsolls or canvas shoes.
- Shoes should be of a safe and sensible style. Shoes should have a low heel. High heels of any sort are not acceptable.
- Black shoelaces.

**Jewellery:**

- For reasons of safety only limited items of jewellery are permitted. In the case of pierced ears, one pair of plain metal studs in the ear lobes may be worn but are not encouraged. These must be removed for P.E. so any new piercing must be done at the start of the six-week holidays. Parents who wish their child to wear a piece of jewellery for religious reasons must apply to the Headteacher in writing for their agreement.
- No other facial or visible body piercings are allowed; this includes nose and tongue piercings.
- No smart watches

**Make Up & Accessories:**

- Make-up should be subtle and minimal
- Hand decoration is not permitted, unless for religious observance
- Nail varnish or false nails are not permitted
- False eyelashes are not permitted
- No sunglasses

**Headwear:**

- All accessories must be black or navy.
- There is no restriction on hair colour or style.
- Long or beaded hair must be pulled back for sports and practical subjects.
- No headscarves except for religious reasons

**Outdoor Wear Only:**

- Plain black or navy coat with minimal logo. No leather or denim.
- Plain dark hats, scarves and gloves
- Hooded tops are not permitted.
- Clothing associated with sports teams (other than AES) are not permitted.

**PE KIT supplied by Price and Buckland – See visual on page 40****Essential:**

- Royal blue polo shirt with yellow piping and school badge\*
- Royal blue skort, **or** Royal blue shorts with yellow piping and school badge\*
- Royal blue reversible Rugby shirt with yellow piping with **or** without school badge\* **and/or** Royal blue sweatshirt with yellow piping, with **or** without school badge\*
- Royal blue socks with yellow top
- Rugby gum shield.
- Sports training shoes (not plimsolls), no Velcro fastenings.
- Any colour football or rugby boots and football shin pads.

**Optional:**

- Navy blue tracksuit with yellow piping with or without school badge\*
- Royal blue base layer top
- Royal blue or black base layer leggings

**Wearing Glasses Whilst Playing Sports:**

If your child needs to wear glasses in order to safely participate in PE and be able to see clearly, they are required to wear specialist sports glasses for any contact sports such as football and rugby. You may also wish to consider sports glasses for other ball games such as netball and basketball.

**Parents are free to purchase uniform from any supplier if it conforms to the uniform requirements and the colours established by the school's suppliers:**

**School Uniform suppliers\***

Price and Buckland  
PMG Schoolwear

[www.price-buckland.co.uk](http://www.price-buckland.co.uk)  
[www.pmg-schoolwear.co.uk](http://www.pmg-schoolwear.co.uk)

**School PE Kit supplier**

Price and Buckland

[www.price-buckland.co.uk](http://www.price-buckland.co.uk)

**Anglo European School**

Student Services also supply year group pin badges, blazer badges, school ties and gum shields.

**Nearly new Uniform and PE Kit:** Nearly new uniform and PE kit is available by contacting Student Services via [enquiries@aessex.co.uk](mailto:enquiries@aessex.co.uk)

**ALL UNIFORM/P.E. KIT MUST BE CLEARLY MARKED WITH THE OWNER'S NAME**

Regrettably, the School cannot take responsibility for loss or damage to property.

Any parents with concerns regarding the Uniform Policy should address them directly to the Headteacher.



Price and Buckland Limited

[www.price-buckland.co.uk](http://www.price-buckland.co.uk)

Tel: 01159640827 / Email: [sales@pricebuckland.co.uk](mailto:sales@pricebuckland.co.uk)

### School Uniform for Years 7-11:

	<u>Sizes</u>	
Navy Blazer with school badge	28" to 36"	£27.95
	38" to 48"	£33.45
School tie to be worn with white button Up shirt/white blouse	52"	£8.40
Open Collar gold blouses twin pack Long/short sleeves No Tie	24" to 36"	£16.80
	38" to 48"	£19.95
White shirts and white blouses available from website, to be worn with a tie, £15.75 to £18.90		
<b>Optional</b> knitted sweater with gold stripe and school badge	28"-36"	£19.00
	38"-48"	£22.75
Knife pleat skirt with adjustable waist With school badge	20" to 26"	£19.50
	28" to 40"	£24.00
Girls' trousers, black Three lengths available	22" to 26"	£15.50
	28" to 40"	£18.50
Boys Trousers, black, pleat or flat front	24" to 26"	£15.50
	28" to 40"	£18.50

### Orders on-line

Sizing guides on our website: <https://www.aesessex.co.uk/uniform-list/> or on Price and Buckland website: [www.price-buckland.co.uk](http://www.price-buckland.co.uk)

Free delivery to work/home address on all orders over £65.00

Free delivery into School on certain dates: <https://price-buckland.co.uk/into-school-delivery-timetable>.

**Please note, last date to order into school for September 2026 is 5<sup>th</sup> July**

Parents can spread payments across 3 months through Klarna, no extra fees

Accepts all major credit and debit cards including Google Pay and Apple Pay

Free returns

**To ensure delivery for the start of September term, we strongly advise that you place your orders by the 1<sup>st</sup> August 2026**



Price and Buckland Limited

[www.price-buckland.co.uk](http://www.price-buckland.co.uk)

Tel: 01159640827 / Email: [sales@pricebuckland.co.uk](mailto:sales@pricebuckland.co.uk)

**PE kit for Years 7-11:**

Essential	Size	Price
Royal blue polo shirt with yellow piping and school badge	Size 28"-S Size M-XXL	£10.00 £11.90
Royal blue skort with yellow piping and school badge Or Royal blue shorts with yellow piping and school badge	22-26" 28"-36" 9-13 years Size S-XXL	£14.00 £16.70 £10.00 £12.00
Royal blue reversible rugby shirt with yellow piping, with or without school badge <b>and/or</b> Royal blue ¼ zip sweatshirt with yellow piping, with or without school badge	30-32", XS, S Size M-XXL <b>and/or</b> 9-13 years Size S-XXL	£18.00 £21.50 <b>and/or</b> £17.00 £20.50
Royal blue socks with yellow top	Size 12-2, 3-6 Size 7-11	£6.50 £8.00
Optional	Size	Price
Navy blue tracksuit top with yellow piping, with or without school badge	9-13 years S-XXL	£19.25 £23.25
Navy blue tracksuit bottoms with yellow piping	9-13 years S-XXL	£14.50 £17.50
Royal blue base layer top	28"-XL youth XS-XXL	£14.75 £15.75
Black base layer leggings	22" to XL Yth S-XXL	£17.50 £21.50

Orders on-line

Sportswear available as a bundle – **10% discount** when you buy:

1 x Sports Polo

Reversible Sports Shirt or ¼ zip Sweatshirt

Shorts or Skort

Sports Socks

Sizing guides on our website: <https://www.aesessex.co.uk/uniform-list/> or on Price and Buckland website

Free delivery to work/home address on all orders over £65.00

Free delivery into School on certain dates: <https://price-buckland.co.uk/into-school-delivery-timetable>.

**Please note, last date to order into school for September 2026 is 5<sup>th</sup> July**

**To ensure delivery for the start of September term, we strongly advise that you place your orders by the 1<sup>st</sup> August 2026**

Free returns.

Parents can spread payments across 3 months through Klarna, no extra fees

Accepts all major credit and debit cards including Google Pay and Apple Pay



Website: [www.pmg-schoolwear.co.uk](http://www.pmg-schoolwear.co.uk)  
Telephone: 01895 809321

**School Uniform for Years 7-11:**

Navy Blazer with badge on pocket	From £39.99
Navy pleated skirt, with badge on top left	From £27.99
Gold short sleeve blouses twin pack	From £14.99
V neck jumper with gold trim	£18.50
Various trousers, boys	From £10.99
Various trousers, girls	From £18.99
Long sleeve White shirt, twin pack	From 14.99
Long sleeve white shirt twin pack	From 14.99

Sizing guides are available on PMG website: <https://pmg-schoolwear.co.uk/>

**To ensure delivery for the start of September term, we strongly advise that you place your orders by the 31<sup>st</sup> July 2026**

# SCHOOL UNIFORM



Main School Uniform: 1

Main School Uniform: 1

Main School Uniform: 2



# PE KIT



**Plain black leather shoes without commercial logos. No boots, sandals, trainers, plimsolls or canvas shoes. Shoes should be of a safe and sensible style. Shoes should have a low heel. High heels of any sort are not acceptable. No coloured laces**



**Students are not to wear headwear on the school site\***

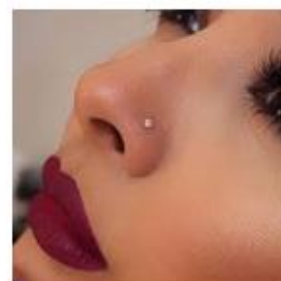
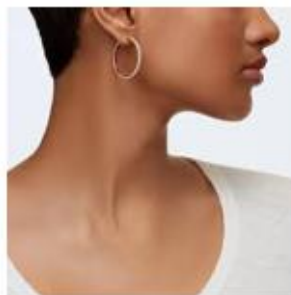


\*Unless permission is received from the Headteacher for religious or cultural reasons

## No hoodies, tracksuit tops or multi-coloured coats



**No jewellery may be worn, other than a small plain stud earring worn in the ear. These must be removed for P.E. so any new piercing must be done at the start of the six-week holidays.**



**‘No false nails or nail varnish’**



# EQUIPMENT NEEDS

**ALL STUDENTS** are expected to equip themselves for lessons. Items needed are black or blue biro and green biro for response to assessments, pencils, coloured pencils, highlighter pens, eraser, metric ruler, glue stick, a rough book or file with file paper.

**Yondr Pouch for mobile phones and smart devices:** Please see information on pages 15-16. These can be purchased through ParentPay for £15.75 per pouch.

<b>Art:</b>	A sketchbook for all art lessons - £1.20 (Years 7–9) or £2.50 (Years 10–U6) payable through ParentPay.
<b>Technology:</b>	A donation of £5, in each of years 7-9, would be appreciated to help cover the cost of materials used in our workshop projects. Additionally, students will need to supply the ingredients required for practical lessons in food, as well as suitable containers for the finished dishes. A hairband is compulsory for long hair when cooking. A USB stick is required for IT and Computing lessons.
<b>English:</b>	A pocket combined dictionary and thesaurus (Oxford or Collins)
<b>Humanities:</b>	A scientific calculator will be needed in some humanities lessons, particularly Geography, Business Studies and Economics. A reference atlas at home would be useful, we suggest Philip's Modern School Atlas 99th edition.
<b>Mathematics/Science:</b>	Scientific calculator with fraction functions; Casio FX-83GT recommended. A set of geometrical instruments (including protractor and pair of compasses).
<b>Modern Languages:</b>	A bilingual dictionary for each language you are studying (in English and the foreign language). We recommend Oxford or Collins.
<b>Physical Education:</b>	PE clothing and equipment requirements can be found on page 22, 23 and 35

**Students will be responsible for their own equipment, and items should be clearly named.**

## TEXTBOOKS:

Textbooks provided by the school are used for a number of years and parents will be expected to replace lost or damaged books. When a student leaves they must complete a 'Student Leaver's Form' confirming all books and equipment have been returned.

## EXAMPLE OF AES VISITS PROGRAMME

Visit	Year Group	Country	Duration	Aims and principles	Curriculum areas
<b>Ebblinghem Château on the Opal Coast</b>	7	France	7 days	Direct experience, of the way of life of other European countries', 'Esprit de corps' encouraging self- discipline and responsibility for own belongings and behaviour.	Science, Geography, History, Mathematics, French and English.
<b>Avignon/Dinan</b>	8/9	France	8-10 days	Exchange on home-to-home basis. Encourages students to experience at first hand the way of life in another European country. Use of another language.	Geography, Ecology, History, Art French.
<b>Wiesbaden</b>	8/9	Germany	10 days	Exchange on home-to-home basis. Encourages students to experience at first hand the way of life in another European country. Use of another language.	History, Geography, Industrial awareness - German.
<b>Madrid/Puerto Real/ Blanes/Girona/Granada</b>	8/9	Spain	8 days	Exchange on home-to-home basis. Encourages students to experience at first hand the way of life in another European country. Use of another language.	Spanish plus cross curricular work.
<b>Saronno</b>	8/9	Italy	8 days	Exchange on home-to-home basis. Encourages students to experience at first hand the way of life in another European country. Use of another language.	Italian plus cross curricular work.
<b>Japan</b>	9/10/L6	Japan	10 days	A cross curricular residential offering students the opportunity to learn about the language and culture of Japan first hand by visiting Tokyo, Kyoto and Hiroshima. (Bi-annual)	Japanese plus cross curricular work.
<b>China (MEP)</b>	9	China	12 days	As part of the Mandarin Excellence Programme – Intensive Mandarin lessons and cultural experience. Opportunities to experience an area of China and develop their knowledge of the language.	Chinese, History, Dance and Citizenship

Visit	Year Group	Country	Duration	Aims and principles	Curriculum areas
<b>Frankfurt Long Term</b>	10	Germany	8 weeks	Long term exchange on home-to-home basis.	Involves direct study in German school following similar subjects where available. Also maintaining UK studies whilst there.
<b>Avignon Long Term</b>	10	France	3 weeks	Long term exchange on home-to-home basis.	Involves direct study in French school following similar subjects where available. Also maintaining UK studies whilst there.
<b>Puerto Real Long Term</b>	10	Spain	3 weeks	Long term exchange on home-to-home basis.	Involves direct study in Spanish school following similar subjects where available. Also maintaining UK studies whilst there.
<b>History Residential</b>	10	UK	4 days	To enhance students' understanding of the focus topic for that year's GCSE examinations.	History
<b>Paris Residential</b>	10	France	5 days	To develop students' understanding of French culture, visiting a number of museums to enhance their understanding of the arts, science and languages.	French plus cross curricular work in RE, arts and science.
<b>Iceland Residential</b>	10 / L6	Iceland	5 days	To develop students' understanding of life in Northern Europe in an area of tectonic and geothermal activity.	Geography and Science
<b>South Korea Residential</b>	10 / L6	South Korea	6 days	To allow students to understand South Korean culture alongside cross curricular work in business history and science. (Tri-annual).	History plus cross curricular work in business and science.
<b>Geography Field Studies Centre</b>	11	North Wales	5 days	Course work and real-world examples of topics studied in class.	Geography field study.

Visit	Year Group	Country	Duration	Aims and principles	Curriculum areas
<b>International Work Experience</b>	L6	Germany/ France/Spain	2 weeks	Home-to-home exchange whilst gaining work experience. Placements found by German/French/Spanish colleagues.	Language experience plus insight into working practices abroad.
<b>Slapton Ley Geography Field Visit</b>	L6	Devon	5 days	Practical aspects of IB / A Level syllabuses - perfecting field work techniques, development of skills for A Level, investigative study; and field work record for IB Higher study.	Geography field study.
<b>Dale Fort Biology Field Visit</b>	L6	Pembroke	5 days	For all studying Biology to A level, IB Higher and IB Standard. Study of Ecology of rocky shores; practical work used for assessment.	Biology field study.
<b>UN / Cern Geneva</b>	L6	Switzerland	6 days	The programme involves a tour of the Palais des Nations and briefings from expert UN staff. There will also be a tour of the particle collider at Cern. (Bi-annual)	Politics, Economics, Science and Business
<b>Krakow/Vienna</b>	L6	Poland and Austria	5 days	The programme is focused on visiting Auschwitz and the city of Krakow in Poland and the UN in Vienna followed by taking a cruise on the Danube.	Citizenship, RS, History, Geography and Music

# EXAMPLE OF YEAR 7 HOMEWORK TIMETABLE

Please refer to our website, under Curriculum/Homework, for the latest timetable

DAY	A	C	E	M	N	P	S	T
	Fr/Gm	Ce	Fr/Sp	Gm/Sp	Fr/Sp	Fr/Gm	Fr/Sp	Gm/Sp
<b>1</b>	Ma 30 mins Mu 30 mins	Ma 30 mins Mu 30 mins	Ma 30 mins Ct 30 mins Rs 40 mins	Ma 30 mins Rs 40 mins	En 30 mins	Fr 30 mins Gg 40 mins	Sp 30 mins	Gm 30 mins Hi 40 mins
<b>2</b>	Gm 30 mins Mu 30 mins	Ct 30 mins Hi 40 mins	En 30 mins	Gm 30 mins	Ct 30 mins Rs 40 mins	Mu 30 mins	Sc 30 mins Fr 30 mins	Ct 30 mins En 30 mins
<b>3</b>	En 30 mins Fr 30 mins	En 30 mins Ce 30 mins	Fr 30 mins	Sc 30 mins Ct 30 mins	Sc 30 mins Sp 30 mins	En 30 mins Sc 30 mins	En 30 mins Gg 40 mins	Sc 30 mins
<b>4</b>	Sc 30 mins	Sc 30 mins	Sc 30 mins Gg 40 mins	Sp 30 mins	Ma 30 mins Fr 30 mins	Ma 30 mins Gm 30 mins Rs 40 mins	Ma 30 mins Mu 30 mins	Ma 30 mins Rs 40 mins
<b>5</b>	Tn/Ar 30 mins	Tn/Ar 30 mins Ce 30 mins	Tn/Ar 30 mins Sp 30 mins	Tn/Ar 30 mins En 30 mins	Tn/Ar 30 mins Gg 40 mins	Tn/Ar 30 mins	Tn/Ar 30 mins Ct 30 mins	Tn/Ar 30 mins Sp 30 mins
<b>6</b>	Ma 30 mins Hi 40 mins	Ma 30 mins	Ma 30 mins	Ma 30 mins Mu 30 mins	En 30 mins	Ct 30 mins	Sp 30 mins	Gm 30 mins Gg 40 mins
<b>7</b>	Ct 30 mins Gm 30 mins	Gg 40 mins Ce 30 mins	En 30 mins Hi 40 mins	Sp 30 mins Gm 30 mins	Sc 30 mins Sp 30 mins	Gm 30 mins	Sc 30 mins Fr 30 mins	Mu 30 mins
<b>8</b>	En 30 mins Gg 40 mins	En 30 mins Rs 40 mins	Fr 30 mins Sp 30 mins	Hi 40 mins Gg 40 mins	Fr 30 mins Mu 30 mins	En 30 mins Fr 30 mins	En 30 mins Hi 40 mins	Sc 30 mins
<b>9</b>	Sc 30 mins Fr 30 mins	Sc 30 mins	Sc 30 mins	Sc 30 mins	Ma 30 mins	Ma 30 mins Sc 30 mins	Ma 30 mins Rs 40 mins	Ma 30 mins En 30 mins
<b>10</b>	Tn/Ar 30 mins Rs 40 mins	Tn/Ar 30 mins Ce 30 mins	Tn/Ar 30 mins Mu 30 mins	Tn/Ar 30 mins En 30 mins	Tn/Ar 30 mins Hi 40 mins	Tn/Ar 30 mins Hi 40 mins	Tn/Ar 30 mins	Tn/Ar 30 mins Sp 30 mins

Ar-Art; Ce-Chinese; Ct-Citizenship; Dr-Drama; En-English; Fr-French; Gg-Geography; Gm-German; Hi-History; Ma-Mathematics; Mu-Music;  
Rs; Religious Studies; -Sc-Science; SP-Spanish; Tn-Technology

## EXAMPLE OF YEAR 7 PE TIMETABLE (AUTUMN)

Please refer to the website for other year groups:

BLOCKS	DATES	7X1b – A&C - TCC 7Y1b – N&P – SCC	7X2b – E&M – SCC 7Y2b – S&T – NRR	7X1a - A&C – AAW 7Y1a - N&P – AAW	7X2a – E&M - LPC/EBB* 7Y2a – S&T- LPC/EBB*
1	9 SEPTEMBER – 25 OCTOBER	BASILINE TESTING <i>(double lesson in 3rd week)</i> <b>Football/Netball Taster</b> <b>FOOTBALL (Far field)</b> <i>(Fitness/TT in wet weather – gym/ba)</i> <b>OR NETBALL (pg/muga/sh)</b> <b>CROSS COUNTRY</b> <i>(1 double + practice run)</i>	BASILINE TESTING <i>(double lesson in 3rd week)</i> <b>Football/Netball Taster</b> <b>FOOTBALL (Far field)</b> <i>(Fitness/TT in wet weather – gym/ba)</i> <b>OR NETBALL (pg/muga/sh)</b> <b>CROSS COUNTRY</b> <i>(1 double + practice run)</i>	BASILINE TESTING DONE <i>(double lesson in 3rd week)</i>  <b>NETBALL (pg/muga/sh)</b>  <b>CROSS COUNTRY</b> <i>(1 double + practice run)</i>	BASILINE TESTING DONE <i>(double lesson in 3rd week)</i>  <b>NETBALL (pg/muga/sh)</b>  <b>CROSS COUNTRY</b> <i>(1 double + practice run)</i>
2	4 NOVEMBER – 20 DECEMBER	<b>Rugby/Gymnastics Taster</b> <b>RUGBY (out)</b> <i>(Dodgeball in wet weather- mh)</i> <b>OR</b> <b>GYMNASTICS (gym)</b>	<b>Rugby/Gymnastics Taster</b> <b>RUGBY (out)</b> <i>(Dodgeball in wet weather- mh)</i> <b>OR</b> <b>GYMNASTICS (gym)</b>	<b>Rugby/Gymnastics Taster</b> <b>BASKETBALL/BADMINTON</b> <b>(sh/muga)</b> <b>GYMNASTICS (gym)</b> <b>OR RUGBY (out)</b>	<b>Rugby/Gymnastics Taster</b> <b>GYMNASTICS (gym)</b> <b>BASKETBALL/BADMINTON</b> <b>(sh/muga)</b> <b>OR RUGBY (out)</b>
3	6 JANUARY – 14 FEBRUARY	<b>Table-tennis/Dance Taster</b> <b>TABLE-TENNIS (ba)</b> <b>OR DANCE (mh)</b> <b>BADMINTON (sh)</b>	<b>Table-tennis/Dance Taster</b> <b>BADMINTON (sh)</b> <b>TABLE-TENNIS (ba)</b> <b>OR DANCE (mh)</b>	<b>DANCE (mh)</b>  <b>TRAMPOLINING (gym)</b>	<b>TRAMPOLINING (gym)</b>  <b>DANCE (mh)</b>
4	24 FEBRUARY – 4 APRIL	<b>TRAMPOLINING (gym) in dbls</b> <b>FITNESS (gym) single lessons</b> <b>BASKETBALL (sh/muga)</b>	<b>BASKETBALL (sh/muga)</b> <b>TRAMPOLINING (gym) in dbls</b> <b>FITNESS (gym) single lessons</b>	<b>FOOTBALL (Far field)</b> <i>(in wet weather, Table tennis – ba, Dodgeball - mh)</i>	<b>FOOTBALL (Far field)</b> <i>(in wet weather, Table tennis – ba, Dodgeball - mh)</i>
5	22 APRIL – 23 MAY	<b>ATHLETICS (out)</b> <b>CRICKET (out/sh)</b>	<b>CRICKET (out/sh)</b> <b>ATHLETICS (out)</b>	<b>ATHLETICS (out)</b> <b>ROUNDERS (out)</b> <i>(Fitness in wet weather – gym/mh)</i>	<b>ROUNDERS (out)</b> <b>ATHLETICS (out)</b> <i>(Fitness in wet weather – gym/mh)</i>
6	3 JUNE – 18 JULY	<b>ATHLETICS (out)</b> <b>ROUNDERS (out)</b>	<b>ROUNDERS (out)</b> <b>ATHLETICS (out)</b>	<b>ATHLETICS (out)</b> <b>CRICKET (out)</b>	<b>CRICKET (out)</b> <b>ATHLETICS (out)</b>

# EXAMPLE OF PE AUTUMN EXTRA CURRICULAR TIMETABLE

## Maximising Participation – Developing Excellence

The extra-curricular timetable is updated termly and can be found on our website: <https://www.aesessex.co.uk/students/extra-curricular-clubs/>

	<b>Junior Lunch</b>	<b>Senior Lunch</b>	<b>After School</b>
Day 1	No clubs- Yr11 lessons	Yr11 Trampoline Yr10 Netball	Sixth Form Active Hour
Day 2	Yr 7 Boys Football Yr 8-9 Netball Yr 8 Dodgeball	No clubs – Yr8 lessons	
Day 3	Yr 6 Girls Football	Yr10 Trampoline and Rugby	
Day 4	Yr7 Netball Yr 8-9 Boys Football Yr 7 Rugby	No clubs- Yr7 lessons	
Day 5	No clubs – Yr10 lessons	Yr11 Football	
Day 6	No clubs- Yr11 lessons	Yr11 Badminton Yr10 Football	Sixth Form Active Hour
Day 7	Yr 8-9 Netball Yr7 Girls Football Yr7 Dodgeball	No clubs – Yr7 lessons	
Day 8	Yr 8-9 Girls Football Yr8 Ruby	Yr10-11 Table Tennis Yr10 Badminton Yr11 Trampoline and Rugby	
Day 9	No clubs – Yr10 lessons	Yr 10 Badminton Yr 11 Netball	
Day 10	Yr7 Boys Football Yr7 Netball Yr9 Rugby	No clubs - Yr9 lessons	



<b>History revision club</b>	History teacher	10, 11	Wednesdays	15:45 – 16:30	C24
GCSE students are welcome to revise quietly and have one-to-one tuition with History teachers. We will have a range of textbooks and resources available to support your needs, and will happily answer any queries you may have on the topics you have studied.					

## REVISION / CURRICULUM SUPPORT

Activity	Convenor(s)	Years	Day	Time	Venue
<b>*** Languages ***</b>					
<b>German intervention</b>	German teachers	11	Day 9 Day 3	13:30 – 14:30	A12 L06
Lunchtime support with preparation for the GCSE German examination for students in Year 11 only.					
<b>Chinese Native Speaker session</b>	Chinese teacher	All	Wednesdays	15:30 – 16:30	L06
These are lessons which you commit to attending every week to prepare for your GCSE in your native language. The lessons are not suitable for students who are studying Chinese as part of their normal timetable.					
<b>French Native Speaker session</b>	French teacher	All	Wednesdays	15:30 – 16:30	A10
These are lessons which you commit to attending every week to prepare for your GCSE in your native language. The lessons are not suitable for students who are studying French as part of their normal timetable.					
<b>German Native Speaker session</b>	German teacher	All	Wednesdays	15:30 – 16:30	L09
These are lessons which you commit to attending every week to prepare for your GCSE in your native language. The lessons are not suitable for students who are studying German as part of their normal timetable.					
<b>Italian Native Speaker session</b>	Italian teacher	All	Wednesdays	15:30 – 16:30	D09
These are lessons which you commit to attending every week to prepare for your GCSE in your native language. The lessons are not suitable for students who are studying Italian as part of their normal timetable.					
<b>Japanese Native Speaker session</b>	Japanese teacher	All	Thursdays	15:30 – 16:30	D10
These are lessons which you commit to attending every week to prepare for your GCSE in your native language. The lessons are not suitable for students who are studying Japanese as part of their normal timetable.					
<b>Russian Native Speaker session</b>	Russian teacher	All	Wednesdays	15:30 – 16:30	A06
These are lessons which you commit to attending every week to prepare for your GCSE in your native language. The lessons are not suitable for students who are studying Russian as part of their normal timetable.					
<b>Spanish Native Speaker session</b>	Spanish teacher	All	Wednesdays	15:30 – 16:30	A04
These are lessons which you commit to attending every week to prepare for your GCSE in your native language. The lessons are not suitable for students who are studying Spanish as part of their normal timetable.					
<b>Languages drop-in session (French, German, Spanish, Chinese)</b>	Head of Languages & 6 <sup>th</sup> Form prefects	10, 11	Day 3	13:30 – 14:30	L03
Drop-in support run by Sixth Form prefects to help you with your language courses and revision techniques.					

<b>Languages drop-in session (Russian)</b>	Head of languages & 6 <sup>th</sup> Form prefects	10, 11	Day 5	13:30 – 14:30	B06
Drop-in support run by Sixth Form prefects to help you with your language courses and revision techniques.					

## REVISION / CURRICULUM SUPPORT

Activity	Convenor(s)	Years	Day	Time	Venue
<b>*** Mathematics ***</b>					
<b>Maths study club</b>	Maths teachers	All	Mondays	15:30 – 16:30	M101
Provides an opportunity for students to further their understanding of Mathematics. Students must come prepared with work to complete and are expected to stay for at least 45 minutes.					
<b>*** Science ***</b>					
Activity	Convenor(s)	Years	Day	Time	Venue
<b>Biology A Level exam practise and PAGs</b>	Biology teacher	L6, U6	Tuesdays	8:00 – 8:45	E02
Using a range of exam questions to improve exam technique initially working with Year 1 initial topics – biological molecules and cell structure. Reviewing PAGs and PAG catch-up.					
<b>Biology GCSE exam technique</b>	Biology teacher & 6 <sup>th</sup> Form prefects	10, 11	Mondays Wednesdays	13:45 – 14:30 15:30 – 16:30	E02
Using a range of GCSE questions to improve exam techniques for preparation for the summer terminal exams. For GCSE combined and Triple students. And preparation for end of topic tests.					
<b>Moles club</b>	Science teacher	L6, U6	Wednesdays	15:30 – 16:30	E01
Sixth form quantitative Chemistry practice. Bring your own questions or do those provided. Also for Olympiad/C3L6 problem solving.					
<b>Organic mornings</b>	Science teacher	U6	Tuesdays	8:10 – 8:40	E01
Application of A Level Organic Chemistry. Expect to draw hexagons and curly arrows galore!					
<b>Year 11 Chemistry revision</b>	Chemistry teacher	11	Day 4 Day 9	15:40 – 16:00	E04 E02
Revision of Chemistry topics using a range of GCSE questions to improve exam technique to preparation for the December PPEs and summer terminal exams.					
<b>Year 11 Science support</b>	Science teachers	11	see Science teachers		
Build confidence with your Yr9, Yr10 and Yr11 Science topics.					

## CULTURAL

Activity	Convenor(s)	Years	Day	Time	Venue
<b>Anglo Music school</b>	Music teachers	All & Yr 7 All & Yr 8 11, 10 All, Yr 9	Mondays Tuesdays Wednesdays Thursdays	8:40 – 9:10	B11 B15
<p>Monday – Choir – all year groups and abilities (B15)  Monday – Year 7 Ensemble – Ukulele, Keyboard, Guitar, Bass (B11)  Tuesday – Wind &amp; String Ensemble – all year groups and abilities (B15)  Tuesday – Year 8 Ensemble – Ukulele, Keyboard, Guitar, Bass (B11)  Wednesday – GCSE Music Year 11 Ensemble – Yr 11 Music students only (B15)  Wednesday – GCSE Music Year 10 Ensemble – Yr 10 Music students only (B11)  Thursday – Wind &amp; String Ensemble – all year groups and abilities (B15)  Thursday – Year 9 Ensemble – Ukulele, Keyboard, Guitar, Bass, Drums, Voice</p>					
<b>Anime</b>	Mrs Porsz & 6 <sup>th</sup> Form students	7-9	Day 2 Start: 4.10.22	12:45 – 13:25	C21
<p>For those who are interested in Anime, we will be watching various episodes from different genres in order to give an introduction to Anime.</p>					
<b>Art club</b>	Art teacher & 6 <sup>th</sup> Form students	7-9	Day 2 Start: 4.10.22	12:45 – 13:25	B12
<p>If you join this club you will be working with Sixth Formers to create large-scale projects such as displays using recycled paper. You will learn techniques such as quilling, sculpture, collage and assemblage in a creative way.</p>					
<b>First &amp; Second Year Arabic club</b>	Arabic teacher	7 - 9	Tuesdays	12:30 – 13:30	L03
<p>Any KS3 students who are new to studying Arabic.</p>					
<b>Board Game club</b>		7	Days 1 & 8	12:30 – 13:30	C29
<p>This club is designed to Year 7 to encourage them to foster new friendships and meet peers from other forms with whom they may share the same interests and hobbies. Students will be encouraged to play games and interact. Board games not only help develop problem solving and logical thinking but also collaboration and communication.</p>					
<b>British Sign Language</b>	Mrs Porsz & 6 <sup>th</sup> Form students	7-9	Day 2 Start: 4.10.22	12:45 – 13:25	C22
<p>Introduce students to British Sign Language. The topics would include: the alphabet, numbers, colours, emergency medical signs, greetings and how to get the attention of a deaf person.</p>					
<b>Chess club</b>	Mr Price	7-9	Day 9	12:30 – 13:30	C22
<p>This club is for anyone, from complete beginners to more experienced players who want to practise.</p>					
<b>Chinese Culture Club</b>	Chinese teacher	7, 8	Wednesdays	12:30 – 13:30	A09
<p>Chinese Culture Club welcomes all those who are passionate about learning Chinese and Chinese culture. Our CLEC teacher has developed a curriculum with rich cultural elements and fun language activities. Let's explore Chinese language and culture together.</p>					
<b>Coding club</b>	Technology teacher & 6 <sup>th</sup> Form students	7-9	Day 7 Start: 11.10.22	12:45 – 13:25	C30
<p>This club is for anyone interested in developing your coding skills at any level. Join us to create games, to write computer programs or to solve problems.</p>					

## CULTURAL

Activity	Convenor(s)	Years	Day	Time	Venue
<b>Debate Society</b>	Citizenship teachers	All	Wednesdays	15:45 – 16:30	B01
This club is an opportunity to improve public speaking and debating skills. It is a chance to work with pupils across different age groups and to discuss current affairs and global issues too. There may be opportunity to enter competitions with other schools or take part in additional visits. In previous years the Debate Society went to Downing Street!					
<b>Drama club</b>	Drama teacher & 6 <sup>th</sup> Form students	7-9	Day 7 Start: 31.10.22	12:45 – 13:25	A02
Drama club is a great way to build confidence, meet new friends and develop your ability to perform, whether that be in front of a live audience or to your family at home. Led by our Lower Sixth students, you will have fun, playing Drama games, learning new skills and creating imaginative performances.					
<b>Enterprise club</b>	Mrs Mason	All	Wednesdays Start: 5.10.22	15:30 – 16:15	E05
This club allows students to develop a business, with mentoring and funding opportunities provided by the Peter Jones Foundation.					
<b>Foreign Film club</b>	Head of Languages & 6 <sup>th</sup> Form prefects	10, 11, L6, U6	Day 10	13:30 – 14:30	L01
A club run by Sixth Form Prefects open to anyone interested in foreign cinema. Each week we'll be watching a film from one of our target language cultures.					
<b>Languages club</b>	Head of Languages & 6 <sup>th</sup> Form prefects	7-9	Day 1	12:30 – 13:30	A05
A club run by Prefects which will include games, drama, music and film to bring your language learning to life.					
<b>LAMDA (fee-paying)</b>	In partnership with LAMDA teacher	All	Wednesdays	15:30 – 16:30	A02 A03
<b>Leading to Nationally Recognised Certification in Acting and Speaking of Verse and Prose</b> – helping students to communicate effectively in different social situations.					
<b>Mini-Thinkers Club</b>	Humanity teacher & 6 <sup>th</sup> Form students	7-9	Day 2 Start: 4.10.22	12:45 – 13:25	C27
Join the Mini-Thinkers club to discuss and debate interesting topics and to develop your critical thinking skills. You will consider different perspectives and the fact that other people, with their differences, can also be right.					
<b>Music Culture Club</b>	Music teacher & 6 <sup>th</sup> Form students	All	Thursdays	15:45 – 16:30	B11 B15
Music Culture Club is an opportunity for all year groups to expand their music knowledge by viewing music in a social, historical and cultural light. This is done through receiving lectures and doing practical activities in order to get a better understanding of music. The club is run by sixth form Music students who are interested in giving lectures about such topics.					

## CULTURAL

Activity	Convenor(s)	Years	Day	Time	Venue
<b>Pop Culture club</b>	Mrs Porsz & Sixth Formers	7-9	Day 2 Start: 4.10.22	12:45 – 13:25	S19
Following our successful K-Drama club, we have decided to run a Pop Culture club with videos, games and quizzes about a variety of pop culture topics. We will include K-Drama (Korean Drama) as part of this, alongside icon such as Taylor Swift.					
<b>Science / STEM club</b>	Science teachers	7	Wednesdays	12:50 – 13:30	S03
Allow students to explore aspects of Science that are not always possible within the constraints of a normal school timetable.					
<b>Swedish for Beginners club</b>	Mrs Porsz & 6 <sup>th</sup> Form students	7-9	Day 2 Start: 4.10.22	12:45 – 13:25	E07
Would you like to learn the basics of a new language? Would you like to know more about the country that gave us ABBA and IKEA? Join a native speaker and some other Sixth Formers to learn beginner-level Swedish with other students from years 7-9, and to find out more about what Sweden is really like.					

# STUDY CLUB

## Code of Expectation

**Opening Hours: 08:00 to 08:50 and 15:30 to 16:30, Monday to Friday**

- Students agree that the AES Code of Classroom Conduct applies at all times.
- Students using Study Club understand and accept that it is an extension of the school day.
- Students wishing to use Study Club must sign in on arrival and sign out when they leave.
- Students agree to attend Study Club with at least enough schoolwork to cover the time they are in attendance. Appropriate work includes homework, coursework, revision, reading books and other literature related to the curriculum. This includes books being read for personal pleasure provided they are of a reading age appropriate to the student and are not offensive.
- Students understand that the Study Club staff can offer general study advice, but they cannot advise on subject specific matters
- Students have free access to 30 computers, subject to their availability but accept that the AES Code of Conduct for Use of Computers applies in Study Club as it does throughout the school whatever time of day.
- Students are expected to contribute and help maintain a quiet, serious working atmosphere and that they should remain in their seats except when needed to access a computer or look for a book.
- Students accept that they may receive warnings regarding their behaviour and that if they receive three warnings, they will not be able to attend Study Club for an appropriate period. This is in line with our policy to deal with low-level disruption in lessons and is well understood by students. In such cases, a letter will be sent home, informing parents or carers of when a student can return to Study Club. Such letters will be recorded on a student's file in the same way that misbehaviour is recorded.
- Parents can phone Study Club/the school office to let their child know once they have arrived at school to collect.
- Students must come directly to Study Club after the final bell. However, a 10-minute grace period will be allowed to use the toilet facilities or take a food break if required.
- Once a student signs out of Study Club they must leave the school premises immediately and Study Club no longer have responsibility for the student
- If a child needs to temporarily leave Study Club e.g., to use the toilet they must inform the Study Club Manager
- If, after Study Club finishes at 16:30, a student has not been collected they must sign out of Study Club and leave the school premises.

# ANGLO EUROPEAN SCHOOL STUDY CLUB

Please complete each part of the form. Students will not be given permission to use the Study Club until these details have been returned. The school must be informed of any changes as soon as possible

Student's Name: \_\_\_\_\_

How will your child be going home after each session? \_\_\_\_\_

Contact Telephone Number (Parent) \_\_\_\_\_

I understand that if my child does not adhere to the Study Club code they may be asked to leave: Yes/No

I understand that it is my child's responsibility to ensure they have sufficient and appropriate work to make proper use of their time in the Study Club and that games, of any sort, are not allowed: Yes/No

I understand that my child will leave the school premises immediately after signing out of Study Club: Yes/No

I have discussed the Study Club Code of Expectation and my child agrees to abide by it: Yes/No

Parents who wish to come into school to collect their child from Study Club must report to the School Office.

Signed: \_\_\_\_\_

Date: \_\_\_\_\_



# Anglo European School

HEADTEACHER: Mrs Jody Gee

Willow Green, Ingatstone, Essex, CM4 0DJ

TELEPHONE: +44 (0)1277 354018

E-MAIL: [enquiries@aessex.co.uk](mailto:enquiries@aessex.co.uk)

WEBSITE: [www.aessex.co.uk](http://www.aessex.co.uk)



Dear Parents,

## Reference: School Private Fund Contributions

In welcoming you and your child to the school community, we would like to draw your attention to the role of our School Private Fund in supporting school activities which fall outside the scope of funds provided by the Education Authority, including sports, drama, music, the school magazine and the improvement of the school environment. Without this fund many activities could not continue.

Since the opening of the school, we have invited parents to make a small voluntary contribution to the fund. In the light of inflation and the increasing calls on this fund, we now ask parents to make their payments under the Inland Revenue Gift-Aid Donations scheme. In this way income tax may be recovered and used to increase the resources of the fund. We are proposing that for the year starting September 2026 the suggested contribution shall be £60 per child. You will no doubt be aware that £60 subscribed in this way will be worth about £75.00 to the Fund at current rates of income tax.

If you can make this contribution, our preferred method is for you to complete the enclosed banker's order. Alternatively, payment can be made by ParentPay or by cheque payable to 'Anglo European School' annually. The Gift Aid form needs to be completed and returned in all cases.

Contributions made to the School Private Fund will enable automatic membership to Anglo European School's Parent's Forum.

Contributions of less than the suggested amount will be equally welcome, and we stress that all payments remain of course on an entirely voluntary basis. We thank you in advance for the support you offer to our school activities and look forward to hearing from you.

Yours sincerely,

Mrs J M Gee  
Headteacher



Mandarin  
Excellence  
Programme



Artsmark  
Platinum Award  
Awarded by Arts  
Council England



# BANKER'S ORDER

Bank Name	
Bank Address	

Bank Account Holders Name	
Account Number	
Sort Code	
Home address	
Postcode	

Please pay the sum of £ ..... on the 1st of November 2026 (or as soon thereafter as this authority has been received by you) to Anglo European School, Account No. 57534660 Sort Code 30-91-85 at Lloyds Bank, High Street, Chelmsford CM1 1DU, and continue to make a similar payment each year on the 1st October until a total of seven annual payments have been made and charging such payment to the debit of my account.

Signature .....

Date .....

Student Name	
--------------	--

Office Use Only

**Please quote ref no..... (to be completed by Finance Office, Anglo European School)**

# GIFT AID DECLARATION

**Boost your donation by 25p of Gift Aid for every £1 you donate**

Gift Aid is reclaimed by the charity from the tax you pay for the current tax year. Your address is needed to identify you as a current UK taxpayer.

**Name of Charity: Anglo European School**

Please treat this contribution of £\_\_\_\_\_, and any other donations I make on or after the date of this declaration until I notify you otherwise, as Gift Aid Donations.

I am a UK taxpayer and understand that if I pay less Income Tax and/or Capital Gains Tax than the amount of Gift Aid claimed on all my donations in that tax year it is my responsibility to pay any difference.

Signed: \_\_\_\_\_

Date \_\_\_\_\_

Full name: \_\_\_\_\_ (CAPS)

Address: \_\_\_\_\_

Student's name: \_\_\_\_\_

Year Group: \_\_\_\_\_

Please notify the Anglo European School if you no longer pay sufficient tax on your income and/or capital gains.

Please contact your bank if you wish to cancel the payment.

If you pay Income Tax at the higher or additional rate and want to receive the additional tax relief due to you, you must include all your Gift Aid donations on your Self-Assessment tax return or ask HM Revenue & Customs to adjust your tax code.