

Welcome to the Anglo European School

Bienvenue

ようこそ

Bienvenidos

いらっしやいませ

Добро пожаловать

Willkommen

Benvenuti





Mission Statement

The Anglo European School seeks to develop ambitious, resilient and principled young people who recognise their common humanity and who seek to create a better and more peaceful society through inter-cultural understanding and respect. We encourage our students to become active citizens who are internationally minded, lifelong learners, who understand that other people, with their differences, can also be right.

Aims of the School



Excelencia

To achieve academic excellence through a broad, balanced and inclusive curriculum, enriched by a strong international education.



Interkulturell

To develop respect for their own and others' cultures; celebrating the rich diversity of languages, values and traditions represented in this school.



L'Avenir

To provide students with the essential skills and knowledge to move confidently beyond the boundaries of their own communities as they prepare for the next stage in their lives.

Pillars

Language Learning

Visits and
Exchanges

Citizenship

Academic Research

International
Baccalaureate
Curriculum

Learner Profile

Enterprising

Inquisitive

Knowledgeable

Critical

Courageous

Healthy

Articulate

Principled

Open-minded

Kind

Reflective

Creative



AES Baccalaureate Curriculum

Core Learning



- English Language and Literature
- Mathematics
- Sciences
- 2 Languages or MEP
- Humanities
- Arts
- PE
- Citizenship
- Computing

Personal Project



Key Stage 3 & 4:

Research projects and coursework completed related to subjects studied

Year 9: Brilliant Club (Scholars Programme)

Year 10: Higher Project Qualification

Sixth Form:

IB Diploma: Extended Essay, Theory of Knowledge Exhibition

IB Career Program: Reflective Project

AIB: Extended Project Qualification and Internal Assessment Coursework

A Level: NEA Coursework and MOOCS

Personal Development



- Values & Ethos
- International Dimension
- Visits and Exchanges
- Work Experience
- Extra-curricular
- Global Citizenship/CAS
- Approaches to learning
- CIAG/Work Experience
- International Enterprise Academy
- RSHE Programme
- Leadership/Student Forums & committees
- Paris Saint-German



Languages at AES

		Phase 1 7 Form Groups Study 2 languages			MEP 1 Form Group Mandarin Excellence programme	Phase 2 All students, apart from MEP, can change a Phase 1 language for a Phase 2		
		French	German	Spanish	Mandarin	Italian	Japanese	Russian
Y7		French	German	Spanish	MEP			
Y8 & Y9		French	German	Spanish	MEP	Italian	Japanese	Russian
Y10 & 11 All students study 2 languages	UAS – AQA Unit Award Scheme	French	German	Spanish				
	GCSE	French	German	Spanish	MEP	Italian	Japanese	Russian
6 th form All students study at least 1 language	Intro				Chinese	Italian		
	IB ab initio			Spanish		Italian		
	IB Standard	French	German	Spanish	Chinese	Italian		Russian
	IB Higher	French	German	Spanish		Italian		Russian
	A level	French	German	Spanish				





Our International Curriculum

		The Arts	Citizenship	English	Humanities	Languages	Mathematics	Physical Education	Science	Technology
Key Stage 3 Years 7-9		Art Drama Music	Citizenship (inc PSHE & RSE)	English	Geography History Religious Education	Phase 1: French German Spanish Phase 2: Italian Japanese Russian MEP: Mandarin	Mathematics	Physical Education	Science	Computing Food
Key Stage 4 Years 10-11		Art Drama Music	Citizenship (inc PSHE, RSE and CIAG)	English Language English Literature	Business Studies Geography History Religious Studies			Core PE GCSE PE	Combined Science Triple Science	Computing Food
Sixth Form	A levels Up to 4	Art Drama	Citizenship (inc. UCAS & destinations)	English Language and Literature English Literature	Business Studies Economics EPQ Geography History Psychology Sociology	French German Spanish Intro Italian and Mandarin		Physical Education	Biology Chemistry Physics	Computer Science
	IB Programmes		Government and Politics Global Politics	English Literature	Economics Geography History Philosophy Psychology	French German Italian Mandarin Russian Spanish Intro Italian and Mandarin	Mathematical Analysis Mathematical Applications		Biology Chemistry Environmental Systems and Societies Physics	

National Baccalaureate for England

Core Learning: as above

Personal Development: Work Experience; Visits & Exchanges; Enrichment days; Model United Nations; Giving Nation; Extra-Curricular clubs; Creativity-Action-Service; Eisteddfod; School Production;

Personal Project: – Extended Essay – Extended Project Qualification – Reflective Project; Theory of Knowledge; Approaches to Learning.





Visits and Exchanges Programme



Year 7

France residential (Chateau in Ebbingham)

Year 8 & 9 Exchnages

France (Avignon/ Dinan),

Germany (Wiesbaden),

Spain (Madrid, Girona, Puerto Real, Blanes, Granada)

Italy (Saronno)

Y9 – Cross-Curricular residential visit to Japan (Tokyo & Kyoto)

9C – MEP visit to China

Year 10

Long Term Exchange to France (Avignon 3 weeks), Germany (Frankfurt 8 weeks),

Spain (Puerto Real 3 weeks) or Italy (Venice)

History Visit to South Coast

Cross-Curricular residentials (5 days) to Paris, Iceland, Singapore and Japan

2 weeks Work Experience exchange to China

Duke of Edinburgh expeditions

Year 11

Geography field trip to Wales

Lower Sixth

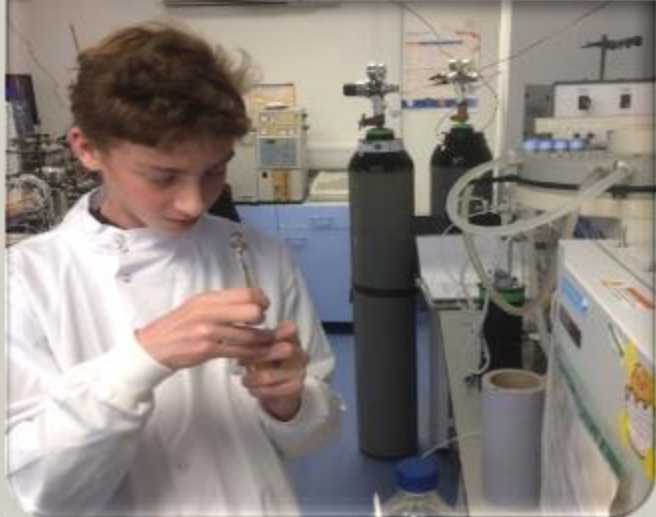
2 weeks Work Experience exchange to China, France (Paris), Germany (Frankfurt) or Spain (Madrid)

Cross-Curricular residentials to Poland, Iceland, Switzerland, Singapore and Japan

Biology and Geography field trips



Preparation for Life in Modern Britain and a Global Society





Student Voice

- Form Representatives
- Student Committees
- Head Students
- School and Subject Prefects
- Talk2Nish Mental Health Ambassadors



The Anglo Family



- In loco-parentis
- Form Tutors
- Attendance Officer
- SEND Co-ordinator
- Pastoral Managers
- Year Leaders / Curriculum Managers
- Student Intervention Manager
- Counselling
- Peer mentoring/Prefects
- Reading mentors
- Creativity Activity Service



Achievements

Key Stage 4

- 79% of our students gained a standard pass in both English and Mathematics, well above the regional and national averages.
- Our students gained higher grades than comparable students nationally both in terms of attainment and progress.
- Students had particularly strong achievements in English, Humanities and Languages.
- Our average number of GCSEs is well above national average. Most students take 10 GCSEs or more.



Sixth Form

- In 2025, 85% of our students went to University, of which 45% were Russell Group and 88% gained their first choice.
- 10% took an apprenticeship or started full time employment and 5% took a gap year.
- Our IB Diploma average was 32/45, beating the world average of 30/45.
- 59% of A Level grades were A*-B.
- International Award 2025
- Artsmark Gold Award
- Healthy Schools Award
- Confucius Classroom & MEP Lead Hub School
- IBSCA Lead
- NBT Associate School
- GEM – Goethe Institute Excellence Mentoring
- NCLE Languages Network Lead
- International Enterprise Academy (in partnership with Peter Jones Foundation)
- Paris Saint-German Academy
- Silver Equalities Award



A Sense of Belonging

- 84 extra-curricular activities eg: Anime, UNYA, Globetrotters, Coding Club
- Arts: Drama school productions/ Eisteddfod, AM School
- Sports clubs
- Model UN Team
- International and Local Charities
- University Partnerships
- STEM Destination Days
- Faraday Challenge
- Science Olympiads
- Duke of Edinburgh
- Brilliant Club
- Elite Performer Programme
- RSC Associate School
- Year 8 Crest Awards
- NCLE Languages Network Lead





School Rebuilding Programme





How to Apply for 2026 intake

- Students from our 4 Feeder Schools who are on roll in Year 6 are entitled to a place at Anglo European School
- 240 out of 1500 students are local
- Students accepted from all categories
- Category 1 Looked after/EHCP, Category 2 Local and feeder schools, Category 3 siblings, Category 4 International and Category 5 other
- Essex deadline for on-line Common Application Form (CAF) is 31st October 2025
- You must place your choices in genuine preference order
- Supplementary information form is not necessary for students from our feeder schools. Deadline 10th November 2025
- National Offer day is 2nd March 2026
- Induction days are 25th and 26th June 2026
- Summer School is 10th to 14th August 2026

For further information contact admissions@aessex.co.uk



We are the Anglo Family !

Diversity is our greatest strength

- 72 languages spoken in the homes of our students
- 59% speak another language
- 7 Languages taught +EAL
- 47 Nationalities
- 14 Religions



